



ESTUDIO CASERO VARIANTE B00

APERTURA IRREGULAR

DEFENSA OWEN

POR EL MF JOB SEPULVEDA



1.e4 b6!?

Teoría (*)

1.e4 b6!?



Diagrama 1, Posición después de 1...b6!?
Buscando sorprender en plena apertura a tu rival

1...a6 2.d4 b5 3.Ad3 Ab7 4.Cf3 e6 5.Cbd2 (5.De2 Cf6 6.a4 c5 7.dxc5 Axc5 8.Cbd2 b4 9.e5 Cd5 10.Ce4 Ae7 11.Ag5! 0-0 12.Cd6 Ac6 13.h4± Volovik - V. E. Kozlov, USSR 1987 - 44/125)



Diagrama A, Posición final Volovik - V. E. Kozlov

5...c5 6.c3 d6 7.De2 Cd7 8.Cf1 Cgf6 9.Cg3 e5 10.a4 c4 11.Ac2 g6 12.b3± Marin - Nanu, Romania (ch) 1998 - 74/(94)]

Estudio Casero Defensa Owen (B00) - Por el MF Job Sepúlveda



Diagrama B, Posición final Marín - Nanu

2.d4



Diagrama 2, Posición después de 2.d4

[2.Cf3 Ab7 3.Cc3 e6 4.d4 Ab4 5.Ad3 Cf6 6.Ag5 h6 7.Axf6 Dxf6 8.0-0 Axc3 9.bxc3 d6 (9...d5 10.exd5 Axd5 11.Ce5 0-0 12.Dh5 Dd8 13.c4 Ab7 14.d5!± Kramnik - Ehlvest, Moscow (ol) 1994 - 62/86)

Estudio Casero Defensa Owen (B00) - Por el MF Job Sepúlveda



Diagrama C, Posición final Kramnik – Ehlvest

10.Cd2 g5! 11.De2 e5 12.De3 Cd7 13.Ab5 0-0-0 14.a4 a5 15.Tab1 The8 16.Tfe1 Dg6 17.Dd3 Rb8∞ K. Nikolaidis – Minasian, Panormo 1998 – 74/(95)



Diagrama D, Posición final K. Nikolaidis – Minasian

; 2.c4 Ab7 3.Cc3 ECO A10] 2...Ab7 3.Ad3

Estudio Casero Defensa Owen (B00) - Por el MF Job Sepúlveda



Diagrama 3, Posición después de 3.Ad3

[3.Cc3 e6 4.a3 Cf6 5.Ad3 d5 6.e5 Cfd7 7.Cce2 V.Kovacevic – Cebalo, Zagreb 1979 – 27/149 7...c5 8.c3 Cc6 9.Cf3 cxd4 10.cxd4 a6 11.0-0 b5± V. Kovacevic]



Diagrama E, Posición final V. Kovacevic – Cebalo

3...Cf6

Estudio Casero Defensa Owen (B00) - Por el MF Job Sepúlveda



Diagrama 4, Posición después de 3...Cf6

[3...e6 4.Cf3 g6 (4...c5 5.c3 cxd4 6.cxd4 Ab4+ 7.Cc3 Cf6 8.De2 d5 9.e5 Ce4 10.0-0 Axc3 11.bxc3 Cxc3 12.De3 Cc6 13.Ab2 Ce4 14.Aa3± Adams – Vanderwaeren, Moscow (ol) 1994 62/87)



Diagrama F, Posición final Adams – Vanderwaeren

5.Ag5 Ae7 6.h4! d6 7.Cbd2 Cc6 8.c3 Cf6 9.De2± Gofstein – Mcshane, Arco 2000 – 80/(66)]

Estudio Casero Defensa Owen (B00) - Por el MF Job Sepúlveda



Diagrama G, Posición final Gofstein – Mcshane

4.De2 e6 5.Cf3 c5 6.c3



Diagrama 5, Posición después de 6.c3

[6.d5!? exd5 7.exd5+ De7 8.c4 Dxe2+ 9.Rxe2 d6 10.Te1 Gómez Baillo – Tempone, Buenos Aires 1993
10...Ae7 11.Rf1± Bauer]

Estudio Casero Defensa Owen (B00) - Por el MF Job Sepúlveda



Diagrama H, Posición final Gómez Baillo – Tempone

6...d5



Diagrama 6, Posición después de 6...d5

6...Ae7 7.a3 c4 8.Ac2 b5 9.h3 0-0 (9...Dc7!? Nisipeanu, V. Stoica) 10.Af4 a5 11.Cbd2 Aa6 12.0-0 Cc6 13.Tfe1 b4 14.axb4 axb4 15.Ag5 d5 16.Ce5! Cxe5 17.dxe5 Cd7 18.Axe7 Dxe7 19.exd5 exd5 20.Cf3± V. Stoica – Ceteras, Romania 2000 – 80/67]

Estudio Casero Defensa Owen (B00) - Por el MF Job Sepúlveda



Diagrama I, Posición final V. Stoica – Ceteras

7.e5 Cfd7 8.Ag5 Dc8 9.0-0



Diagrama 7, Posición después de 9.0-0

[9.Cbd2?! h6 10.Ae3 cxd4 11.cxd4 Aa6 12.0-0 Db7 (12...Axd3 13.Dxd3 Da6 Grischuk – Minasian, Linares 1999 – 74/95 14.Db3 Cc6 15.Tfc1 Tc8 16.Tc3± Grischuk)

Estudio Casero Defensa Owen (B00) - Por el MF Job Sepúlveda



Diagrama J, Posición final Grischuk – Minasian

13.Tac1 Ae7 14.Tc2 Axd3 15.Dxd3 Ca6 16.a3 0-0 17.Tfc1 Tac8= G. Masternak – D. Krzywicki, Wisla 1992]



Diagrama K, Posición final G. Masternak - D. Krzywicki

9...h6 10.Af4 cxd4

Estudio Casero Defensa Owen (B00) - Por el MF Job Sepúlveda



Diagrama 8, Posición después de 10...cxd4

[10...Aa6? Rom. Morales – Elissalt, Cuba 1999 11.c4! dxc4 12.Axc4 cxd4 13.Axa6 Cxa6 14.Cxd4 Ae7 15.Cc3±]



Diagrama M, Posición final Rom. Morales – Elissalt

11.cxd4 Aa6 12.Tc1 Db7 13.Cc3 Axd3 14.Dxd3± Grischuk

Estudio Casero Defensa Owen (B00) - Por el MF Job Sepúlveda



Diagrama 9, Posición final variante teórica

(*) Fuente: Pequeña Enciclopedia de Aperturas (Beograd 2003)

ESTADÍSTICAS CHESSBASE

Informe de aperturas

1.e4 b6



B00, 1...b6

5114 Partidas en 'Mega Database 2007'

1. Historia

Primera partida:

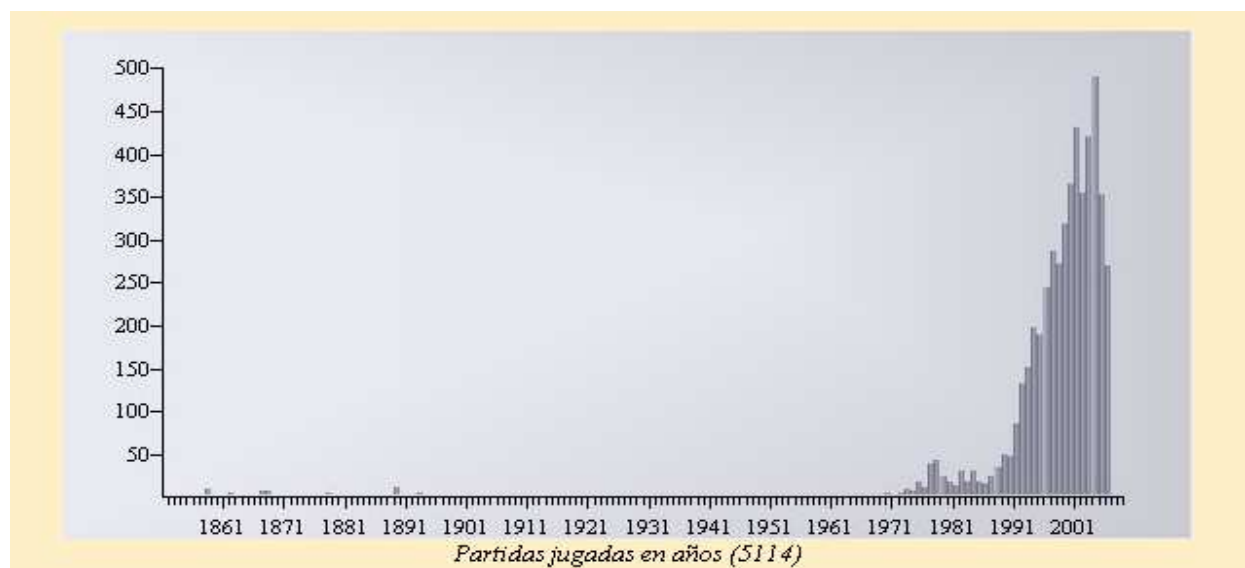
Última partida de gran maestro:

Última partida:

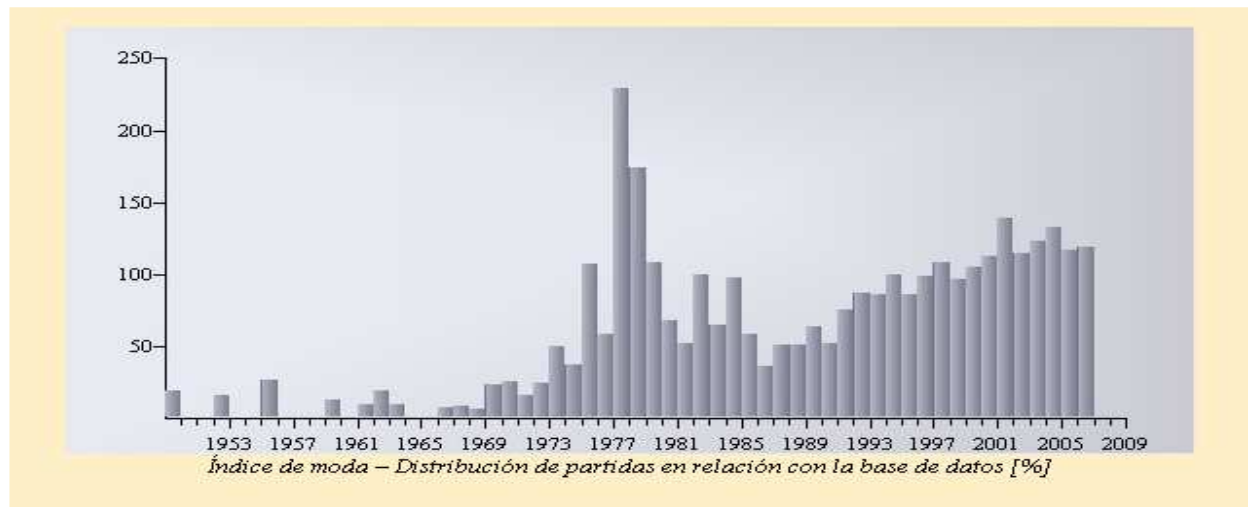
Coopman,M - Van't Kruijs,M 0-1

Ivanchuk,V - Gaprindashvili,N 1-0

Urjubdshzirov,E - Turikov,V ½-½



Estudio Casero Defensa Owen (B00) - Por el MF Job Sepúlveda



2. Jugadores

a) Fuertes grandes maestros que usaron esta línea como Negras:

Anthony J Miles	Resultado=10.5/14	1991-1994	Elo-Ø: 2577	Partidas: 14
Artashes Minasian	Resultado=6.5/14	1994-2000	Elo-Ø: 2574	Partidas: 14
Alexander Ivanov	Resultado=6/6	2000-2006	Elo-Ø: 2587	Partidas: 6
Boris V Spassky	Resultado=3/6	1982-1998	Elo-Ø: 2574	Partidas: 6
Etienne Bacrot	Resultado=2.5/4	2005-2006	Elo-Ø: 2713	Partidas: 4
Smbat G Lputian	Resultado=2/3	1996	Elo-Ø: 2580	Partidas: 3
Bent Larsen	Resultado=1.5/3	1977	Elo-Ø: 2615	Partidas: 3
Vladimir Akopian	Resultado=1.5/2	2000	Elo-Ø: 2660	Partidas: 2
Gata Kamsky	Resultado=1/1	2006	Elo-Ø: 2686	Partidas: 1
Alexander Stripunsky	Resultado=1/1	2000	Elo-Ø: 2610	Partidas: 1

b) Otros jugadores notables:

Pavel Blatny	Resultado=41/60	2000-2006	Elo-Ø: 2491	Partidas: 60
Nona Gaprindashvili	Resultado=30/46	1990-2006	Elo-Ø: 2359	Partidas: 46
Branko Filipovic	Resultado=25/46	1994-2006	Elo-Ø: 2429	Partidas: 46
Morteza Ziabari	Resultado=13/24	1998-2005	Elo-Ø: 1947	Partidas: 24
Tomas Polak	Resultado=13/19	2000-2006	Elo-Ø: 2483	Partidas: 19
Branko Lovric	Resultado=12.5/20	1997-2004	Elo-Ø: 2341	Partidas: 20
Viktor Turikov	Resultado=12/23	1975-2006	Elo-Ø: 2344	Partidas: 23
Isabel Katte	Resultado=11/19	1999-2004	Elo-Ø: 1540	Partidas: 19

3. Estadísticas

Negras puntúa por debajo de la media (42%).

Negras rinde Elo 2042 contra una oposición de Elo 2098 (-56).

Blancas rinde Elo 2154 contra una oposición de Elo 2098 (+56).

Ganan blancas: 2403 (=47%), Tablas: 1081 (=21%), Ganan negras: 1629 (=32%)

La tasa de tablas es baja. (5% tablas rápidas, < 20 Jugadas)

Las victorias con blancas son más cortas que la media (37).

Las victorias con negras son de longitud media (39).

Las tablas son más cortas que la media (35).

Estudio Casero Defensa Owen (B00) - Por el MF Job Sepúlveda

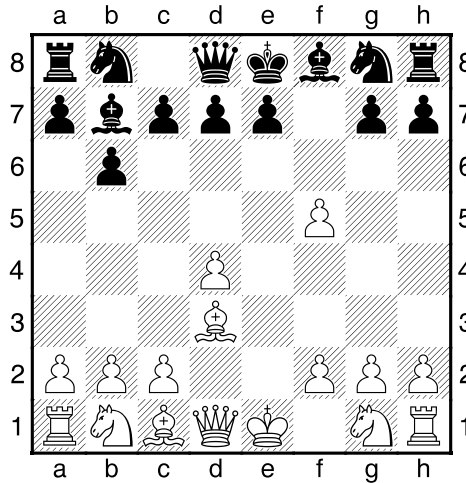
PARTIDAS MODELOS

Shmit, Anatoly – Vitolinsh, Alvis [B00]

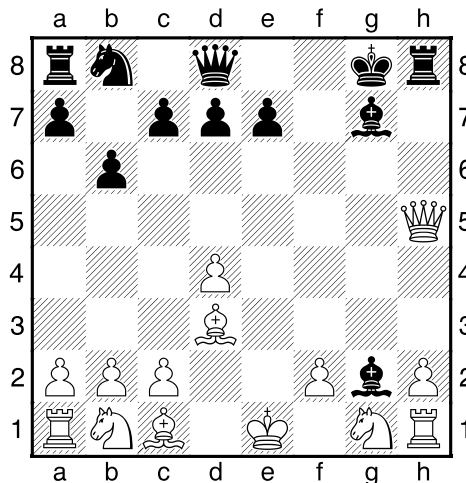
URS Soviet Union, 1969

[ChessBase]

1.e4 b6 2.d4 Ab7 3.Ad3 f5 ΔX♖h8 4.exf5 Diagrama

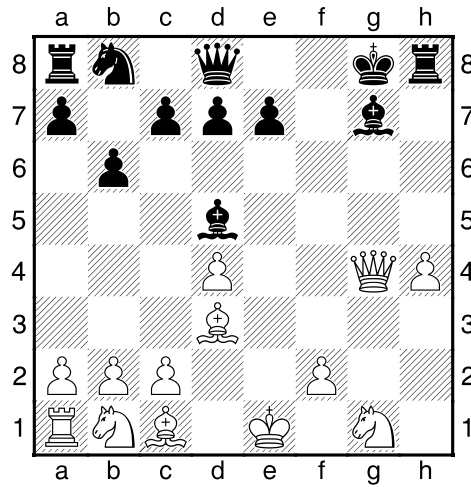


[4.De2] 4...Axc2 5.Dh5+ g6 6.fxc6 Ag7 [6...Cf6?? 7.gxh7+ Cxh5 8.Ag6#] 7.gxh7+ Rf8 8.hxc6D+ [8.Ce2!?] 8...Rxc6 Diagrama

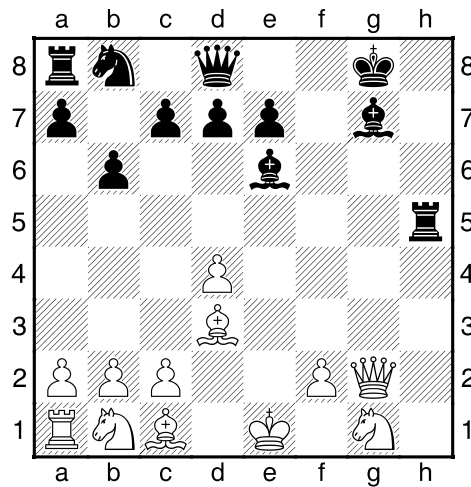


[8...Txc6 9.Df5+ Af6□ 10.Ah6+ Rf7 (10...Re8 11.Dg6+ Δ#) 11.Dh5+ Re6 12.Af4 Δ♙f5 +-] 9.Dg4 Axc2 10.h4 [RR 10.Cc3 Df8 11.Ae3 Df6 12.h3 Dh4 13.Dg6 Cc6 14.0-0-0 e6 15.Cge2 Ce7 16.Dg5 Af3 17.Tg1 Dxc6 18.Axc6 Cf5 19.Axf5 exf5 20.Cf4 Rf7 21.Tg3 Ab7 22.Cb5 a6 23.Cxc7 Tac8 24.Ccd5 Axd5 Lombardy, W-Regan, K/New York 1974/EXT 2001/½-½ (55)] 10...Ad5! Diagrama

Estudio Casero Defensa Owen (B00) - Por el MF Job Sepúlveda

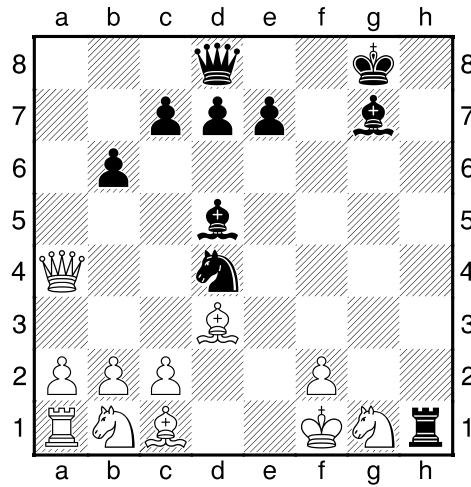


[10...e6 11.h5±] **11.h5** Δh6→ **11...Ae6N** [RR 11...Rf8 12.Cf3 e5 13.dxe5 De7 14.Cc3 Af7 15.Ag5 De6 16.Df4 Cc6 17.0-0-0 Axe5 18.Cxe5 Dxe5 19.Dd2 Txb5 20.Ah6+ Txb6 21.Dxb6+ Dg7 22.Df4 Ce5 23.Ae4 c6 24.Cb5 Cc4 25.Txd7 Dxb2+ 26.Rd1 Betak,M-Filip,F/Prague 1955/EXT 2003/1-0 (36)] **12.Dg2** [12.Dg6 Af7 13.Dg2 Txb5 14.Dxa8 Ad5 ---> Main line] **12...Txb5!** Diagrama

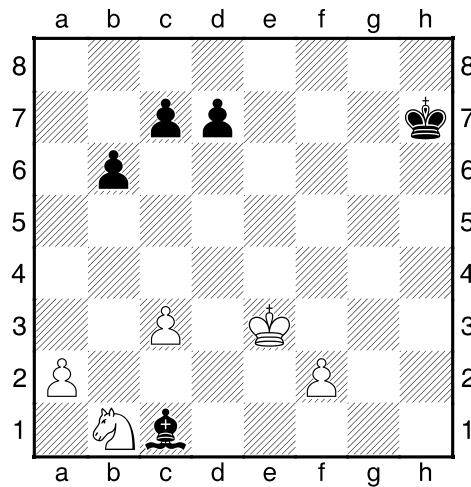


13.Dxa8 Ad5 14.Dxa7 Cc6 15.Da4 [15.Da6 Th1 16.Rf1 Cxd4] **15...Th1 16.Rf1 Cxd4**∞ Diagrama

Estudio Casero Defensa Owen (B00) - Por el MF Job Sepúlveda



17.Ac4 [△17.Cd2] 17...e6 18.Axd5 exd5 19.Af4? Dh4? [19...Cf3!-+] 20.Da8+ Rh7 21.Dxd5 Dh3+ [21...Txg1+ 22.Rxg1 Dxf4 23.Dxd7 (23.Cc3 Dg4+ 24.Rf1 Cxc2 25.Dd3+ Dg6+-) 23...Dc1+ 24.Rg2 Dg5+ 25.Rh2 Cf3+ 26.Rh3 Cg1+ 27.Rh2=] 22.Dg2 Txg1+ 23.Rxg1 Ce2+ 24.Rf1 Dxd2+ 25.Rxg2 Cxf4+ 26.Rf3 Axb2 27.Rxf4 Axa1 28.c3 Ab2 29.Re3 Ac1+ Diagrama



1/2-1/2

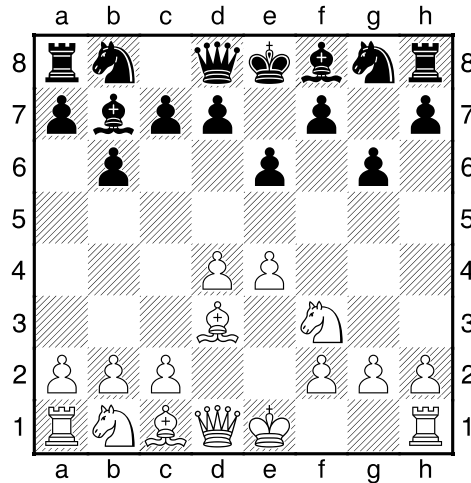
Estudio Casero Defensa Owen (B00) - Por el MF Job Sepúlveda

Geller, Efim P (2525) – Chiburdanidze, Maia (2505) [B00]

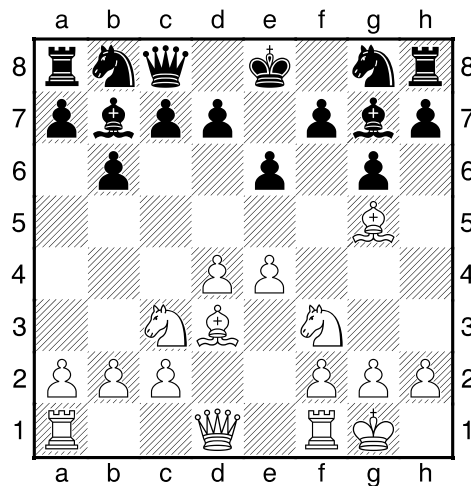
Women-Veterans Aruba (12), 1992

[Blatny, P]

1.e4 b6 2.d4 Ab7 3.Ad3 e6 4.Cf3 g6?! Diagrama



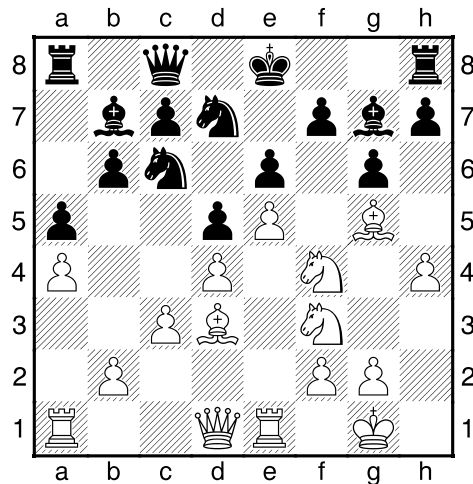
×f6 [Δ4...Ae7 5.0-0 c5↗] **5.Ag5** [RR 5.h4 h6 6.Cc3 d6 7.Af4 Ag7 8.Dd2 Cd7 9.0-0-0 a6 10.The1 De7 11.Cd5 Dd8 12.Ce3 Cdf6 13.Cc4 Cg4 14.De2 h5 15.c3 Dd7 16.Ca3 Ce7 17.Ag3 0-0 18.Cg5 b5 19.f3 Ch6 Bosiocic, M–Sargac, R/Antalya 2006/CBM 110 ext/1-0 (36)] **5...Dc8** [5...Ce7? 6.Af6±; 5...f6 6.Ae3 Ag7 7.Dd2 Ce7 8.Ah6 Δh4→; 5...Ae7 6.Axe7 (6.h4!?) 6...Dxe7 7.Cbd2 Δ♙e2, h4–h5 ±/± ×f6, g7, h6] **6.Cc3** [RR 6.c4 Ag7 7.Cc3 Cc6 8.d5 Ce5 9.Cxe5 Axe5 10.Dd2 Ag7 11.0-0-0 h6 12.Ah4 e5 13.d6 g5 14.Ag3 cxd6 15.Cb5 Af8 16.Ac2 f6 17.Cxd6+ Axd6 18.Dxd6 Th7 19.Rb1 Dc5 20.Dd2 0-0-0 Rublevsky, S–Chernyshov, K/Ohrid 2001/CBM 084/1-0 (53)] **6...Ag7 7.0-0±** Diagrama



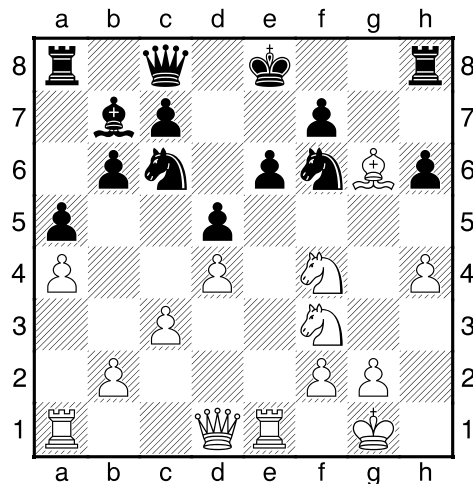
Las blancas mantienen una duradera ventaja considerando la debilidad de las casillas negras (f6 y h6) [RR 7.Dd2 d6 8.h4 h6 9.Ae3 Cf6 10.0-0-0 Cbd7 11.The1 a6 12.Af4 Cg4 13.d5 e5 14.Ag3 Cc5 15.Rb1 f5 16.Ch2 f4 17.f3 Ce3 18.Txe3 fxe3 19.Dxe3 Dd7 20.h5 gxh5 21.Ah4 Df7 Mancini, M–Spasky, B/Corsica 1997/EXT 1999/0-1 (37)]

Estudio Casero Defensa Owen (B00) - Por el MF Job Sepúlveda

7...d6 8.Te1 Cd7 9.e5 d5 [9...Axf3? 10.Dxf3 dxe5 11.Aa6! Db8 12.Ab7+-; 9...dxe5 10.Cxe5 Δ♙b5, ♖e4→] 10.a4 a6 11.Ce2 Ce7 12.Cf4 [12.Axe7? Rxe7 Δc5≡] 12...Cc6 [12...h6 13.Axe7□ Rxe7 14.Axg6!? fxg6 15.Cxg6+ Rf7 16.Cxh8+ Dxh8 17.Ch4 Δ♙a3-g3(f3), ♗h5, f4-f5→] 13.c3 a5 El negro no tienen contrajuego, lo que determina obviamente su derrota [13...h6 14.Af6!] 14.h4!± Diagrama

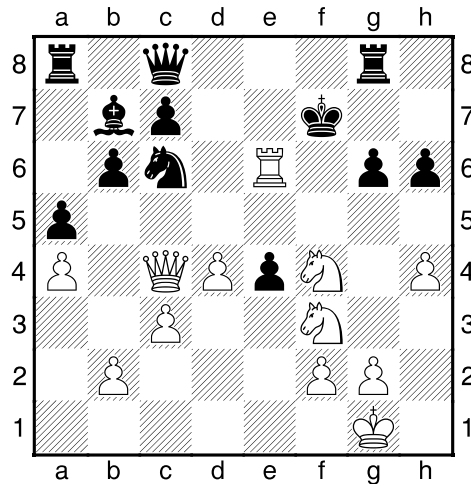


14...h6?! [Δ14...Aa6 15.Ac2 (15.h5?! Axd3 16.Dxd3 Da6 Δ♙f8, ♖d7±) 15...Cf8 16.h5→] 15.Af6 Axf6 [15...Cxf6 16.exf6 Axf6 17.Axg6! (17.Cxd5?! Ag7 Δ0-0 ⇔ ♞a8-h1) 17...fxg6 18.Txe6+ Rf7 (18...Ae7 19.Dd3 Tg8 20.Tae1+-) 19.Dd3 Ce7 20.Tae1 Dg8 21.Ce5+ Axe5 22.T1xe5 Te8 23.Df3 Cf5 24.Txf5+! gxf5 25.Dh5+-] 16.exf6 Cxf6 [16...Cf8 17.Ab5 Rd8□ 18.Dd3+-; 16...0-0 17.h5 g5□ 18.Cxg5! Cxf6 (18...hxg5 19.Dg4+-) 19.Dd2!→ Δhxg5? 20.Cxd5! Ch7 21.Cf6+!+-] 17.Axg6! Diagrama



17...fxg6 18.Txe6+ Rf7 19.Dd3 Tg8 20.Tae1 Δ♙xc6, ♖e5+ +- 20...Ce4 21.T1xe4! dxe4 22.Dc4!! Diagrama

Estudio Casero Defensa Owen (B00) - Por el MF Job Sepúlveda



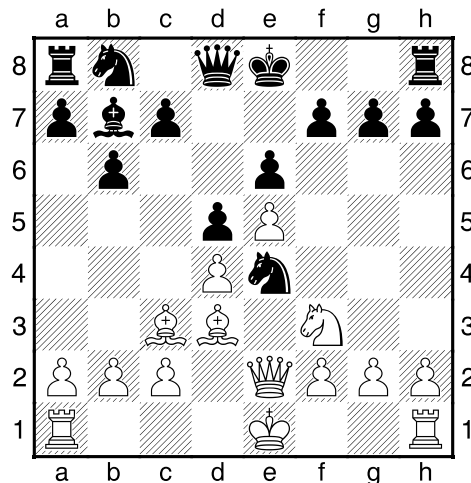
[22.Dc4 Rg7 (22...Aa6 23.Dxc6 exf3 (23...Ab7 24.Ce5+ Rf8 25.Te8+!) 24.Tf6+ Re7 25.Cd5+ Rd8 26.Tf7 Δ♖f6#) 23.Txg6+ Rh8 24.Txh6+ Rg7 25.Tg6+ Rh8 26.Cg5 Df8 27.Cf7+ Rh7 28.De6+-] 1-0

Hopper,Paul – Neil,Kenneth D [B00]

SCO–chT1 Scotland, 1994

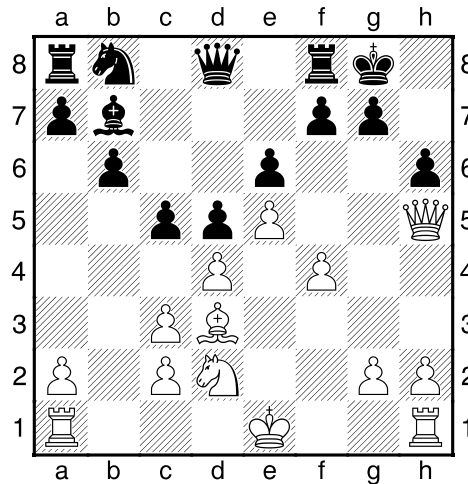
[Neil]

1.e4 b6 2.d4 Ab7 3.Cc3!? [3.Ad3 The main line. 3...f5? (3...e6; 3...Cf6; 3...c5; 3...Cc6!?)] 3...e6 4.Cf3 Ab4 [4...c5?! 5.d5!±] 5.Ad3 Cf6 [5...Ce7 6.0-0 Axc3 7.bxc3 d6 8.Te1 Cd7 9.e5±] 6.De2 d5 7.e5 [7.exd5 Cxd5 8.Ad2 Cxc3 9.bxc3 Ae7=] 7...Ce4 8.Ad2 Axc3 [8...Cxd2 9.Dxd2 Ae7 10.Ce2 Aa6 11.Axa6 Cxa6 12.0-0 c5 13.c3 c4= Janssen–Goodman 1977] 9.Axc3 Diagrama

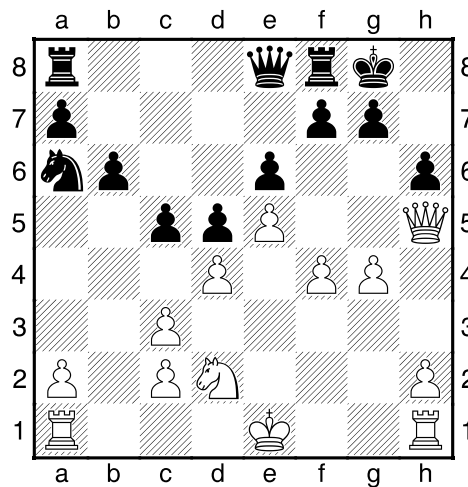


[9.bxc3 f5 Δ...c5,...♞c6–a5 Keene] 9...0-0?! A bit risky. c5 is fine instead. [9...c5!] 10.Cd2!? Challenging Black's best piece and unleashing a kingside attack. About now I began to wish that I had played 9..c5! 10...Cxc3?! [10...f5! Must be better. 11.exf6 Dxf6 12.0-0 Cxc3 13.bxc3 c5] 11.bxc3 c5 12.Dh5 h6 [12...g6 13.Dh6 Δ ♞f3–g5 and h4–h5] 13.f4= Diagrama

Estudio Casero Defensa Owen (B00) - Por el MF Job Sepúlveda

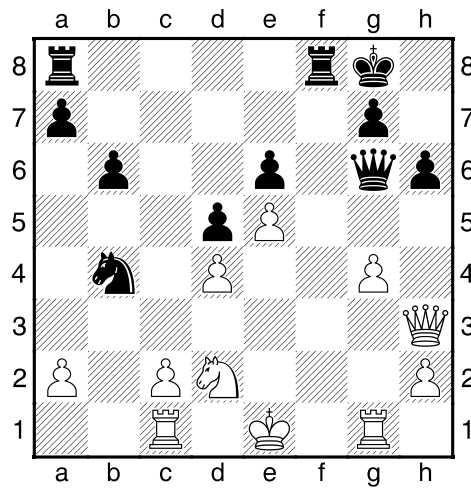


[13.h4 Looks challenging but.. 13...cxd4 (RR 13...Aa6 14.g4 Axd3 15.cxd3 f6 16.f4 cxd4 17.cxd4 Cc6 18.Cf3 fxe5 19.Cxe5 Cxd4 20.Cg6 Cc2+ 21.Re2 Cxa1 22.g5 Tf5 23.Tc1 Rh7 24.Ce5 De8 25.Dg4 h5 26.g6+ Rg8 27.Dg1 Da4 28.Txa1 Seidel,A-Wornath,K/Wiesbaden 1998/EXT 2000/0-1 (31)) 14.cxd4 Aa6 15.Th3 Axd3 16.Txd3 Cc6 17.Tg3 Cxd4 18.Dxh6 Cf5+] **13...Aa6!** Movida fundamental para las negras **14.Axa6 Cxa6 15.g4?! [15.De2; 15.0-0] 15...De8!?** Diagrama

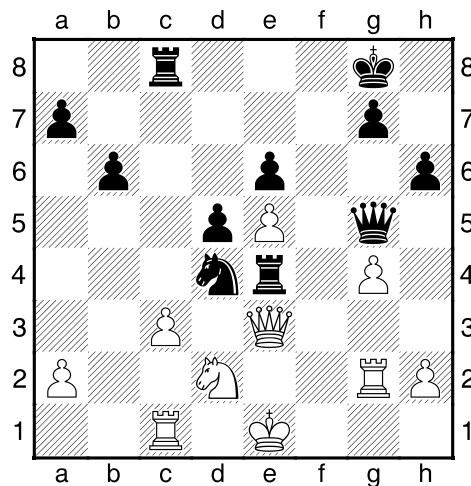


[15...cxd4! 16.cxd4 Cb4 17.0-0 Cxc2 18.Tac1 Cxd4 19.g5 hxg5 20.fxg5 De7 21.g6 fxg6+] **16.Tg1** 16.f5 or 16.g5 meet the same response [16.f5; 16.g5] **16...f6!** 17.Dh3 fxe5 18.fxe5 Dg6 19.Tc1 [19.g5 h5 Sealing the draught] 19...cxd4 20.cxd4 Cb4+ Diagrama

Estudio Casero Defensa Owen (B00) - Por el MF Job Sepúlveda



21.Db3 Cc6 22.c3 Dg5! 23.Tg2 Tf4!? [23...De3+ 24.Rd1 (24.Te2? Dg1+) 24...Dd3 25.Tg1 Tf2 26.Tc2 Ca5! 27.Db1 Cc4 28.Dc1 De2#] 24.Db5 Tc8 25.De2 Cxd4 [25...Te4-+] 26.De3 Te4! Diagrama



0-1

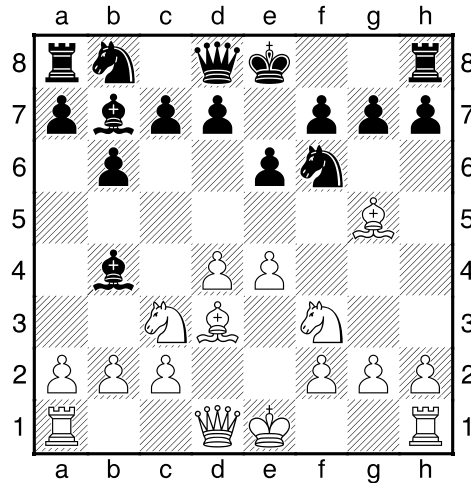
Estudio Casero Defensa Owen (B00) - Por el MF Job Sepúlveda

Wells, Peter K (2545) – Minasian, Artashes (2565) [B00]

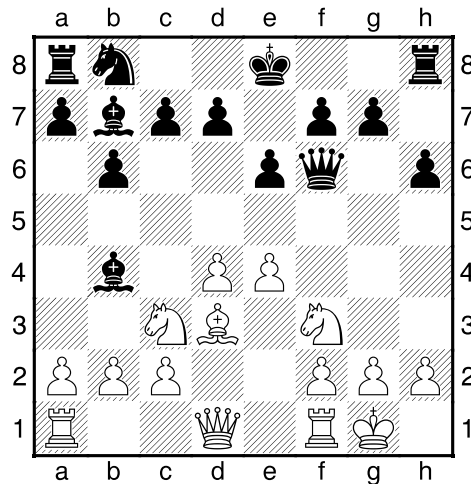
EUCup final Ljubljana (3), 02.12.1995

[Blatny, P]

1.e4 b6 2.d4 Ab7 3.Ad3 Cf6 4.Cc3 e6 5.Cf3 Ab4 6.Ag5 Diagrama



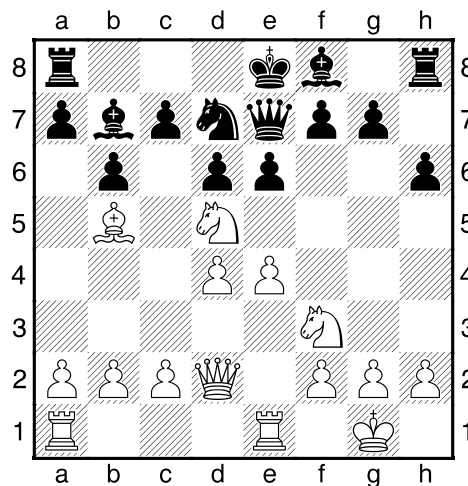
[6.De2 d5 7.exd5 Cxd5 8.Ad2 Cd7 9.Cxd5 Axd2+ 10.Cxd2 Axd5 11.0-0 0-0 12.c4 Ab7 13.Ae4 Axe4 14.Cxe4 Cf6 15.Tad1 Cxe4 16.Dxe4 Dd6= Rogers, I–Miles, A/Auckland (03)/1992/; 6.e5 Ce4 7.Axe4 Axe4 8.0-0 Ag6 9.Ag5 Dc8 10.Ce2 h6 11.Ah4 d5 12.Cf4 Af5 13.Ch5 Af8 14.Ce1 c5↑ Socko, B–Haba, P/Pardubice op (08)/1993/] 6...h6 7.Axf6 [7.Ah4? g5 8.Ag3 (8.e5?? Cd5-+) 8...Cxe4±] 7...Dxf6 8.0-0± Diagrama



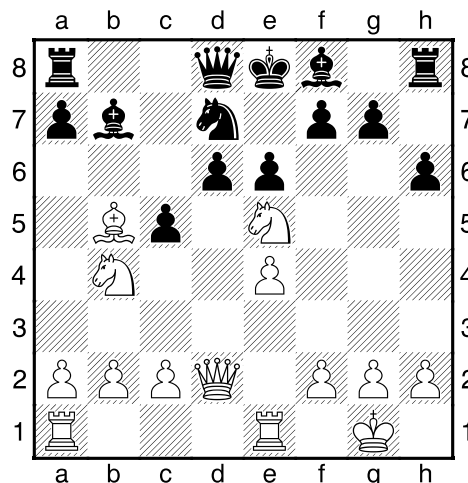
[8.Dd2] 8...Af8?!

Estudio Casero Defensa Owen (B00) - Por el MF Job Sepúlveda

[\square 8...Axc3 9.bxc3 d6 (9...Cc6 10.Tb1 a6 11.De2 e5 12.Cxe5 Cxe5 13.dxe5 Dxe5 \bar{r} Livshits,R-Day,L/Canada zt (10)/1992/) 10.Cd2 e5 11.f4 De7 12.fxe5 dxe5 13.Ab5+ c6 14.Ac4 0-0 15.Tf5 Cd7 16.Dh5 b5 17.Ab3 c5!? 18.dxc5 Cf6! 19.Df3 (19.Txe5 Dc7 20.Df5 Cg4! 21.Cf3 \square Cxe5 22.Cxe5 Tae8 (22...Dxc5+ 23.Rh1 Dxc3 24.Tf1 \bar{r}) 23.Cd7 Axe4 24.Dg4 Te7 25.Cxf8 Dxc5+ 26.Rh1 Dxc3 27.Tf1 Dc6! (27...Rxf8 28.Dh5) 28.Td1 Rxf8 29.Td8+ Te8 30.Dh5 Ag6 31.Txe8+ Dxe8 32.Dc5+ Rg8 33.Dxa7 De1+ 34.Dg1 De2 35.Da7 Rh7 36.Dg1 b4 \bar{r} \perp) 19...Ac8 (19...Dxc5+ 20.Rh1 Tad8 21.Txf6 gxf6 22.Dg4+ Rh8 23.Dh3 Rh7 24.Df5+ Rg7 25.Dg4+=) 20.Txf6 Dxf6 21.Dxf6 gxf6 22.Ad5 Tb8 23.Tf1 Rg7 24.Cb3 Ae6 25.c6 Tbd8 26.Td1 f5! \bar{r} Maljutin,E-Kramnik,V/URS-qualJ Sochi/1990/] **9.Dd2 De7 [9...g5!?] 10.Tfe1 d6 [10...g5 11.De3 g4 12.Cd2 \bar{r}] 11.Ab5+ [11.d5! \bar{r}] 11...Cd7 [11...c6 12.Aa4 Cd7 13.d5 \uparrow] 12.Cd5! \bar{r} Diagrama**



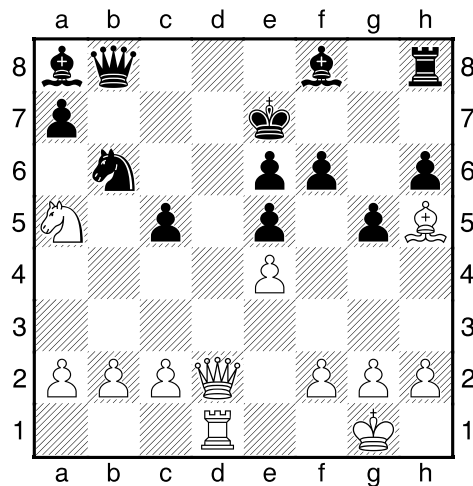
12...Dd8 [12...Axd5 13.exd5 \rightarrow] 13.Cb4 Δ \bar{r} c6 13...c5 14.dxc5 [14.Cc6 Dc7 15.Cce5 dxe5 16.Cxe5 0-0-0! (16...Td8? 17.Df4 f6 18.Dg4 fxe5 19.Dxe6+ Ae7 20.Dg6+ Rf8 21.Ac4+-; 16...Ac8; 16...Ac8) 17.Cxf7 Ae7 ∞] 14...bxc5 15.Ce5! \bar{r} ? ∞ Diagrama



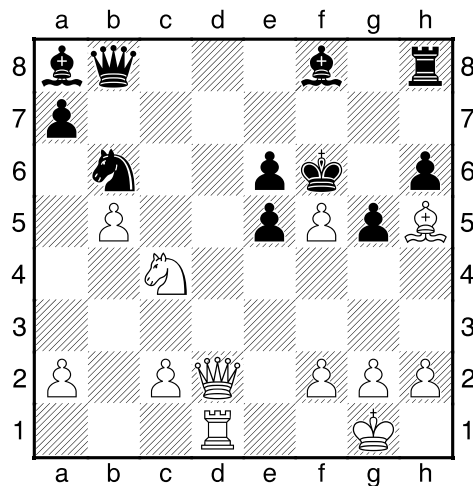
[15.Cc6?! Db6 16.Da5 a6 17.Dxb6 (17.Aa4 Tc8 18.Dxb6 Cxb6 19.Ca5+ Cxa4 20.b3 (20.Cxb7 Cxb2 21.Tab1 Cc4 \bar{r}) 20...Axe4 21.Txe4 Cc3 \bar{r}) 17...Cxb6 18.Ca5+ axb5 19.Cxb7 Ta7+-; 15.Cd5! \bar{r}] **15...dxe5 [15...cxb4 16.Axd7+ Re7 17.Dxb4 Db6 18.Dxb6 axb6 19.Ac6+-]**

Estudio Casero Defensa Owen (B00) - Por el MF Job Sepúlveda

16.Tad1 Ac8 [16...cxb4 17.Axd7+ Re7 18.Dxb4+ Rf6 19.Dxb7+-] 17.Cc6 Db6 18.Aa4 [18.c4 a6 19.Aa4] 18...f6 19.Ca5?! [19.Cxe5!? fxe5 20.Axd7+ Rf7∞] 19...Dc7 [19...Rf7 20.Axd7] 20.Te3 Δ♖d3 20...Re7 21.Td3 Cb6 22.Ac6 Tb8 23.Td8 g5 24.Ae8 Ab7 25.Txb8 Dxb8 26.Ah5? [26.Ac6! Aa6 (26...Ac8!? 27.Dd8+ Rf7 28.Ae8+ Rg7 29.Ah5 Tg8 30.c4!? Da8!? 31.f3∞) 27.Dd7+ Cxd7 28.Txd7+ Re8 29.Tb7+ Rd8 30.Txb8+ Rc7 31.Te8 Rb6 32.Tb8+ Rxa5?! (32...Rc7=; 32...Rc7=) 33.c3! c4 (33...Ac4? 34.a4!! Ag7 35.b4+ cxb4 36.cxb4+ Ra6 37.Ab5+ Axb5 38.axb5#) 34.b4+ cxb3 35.axb3 Ad3 36.c4 Axc4! (36...Ra6 37.Ab5+ Ra5 38.Ad7 Δ 39.♖b5+ ♔a6 40.♙c8# 38...Axc4 39.b4+ (39.bxc4!?!; 39.bxc4!?) 39...Axb4 40.Txh8± ⊥) 37.bxc4 a6=] 26...Aa8!♠ Diagrama



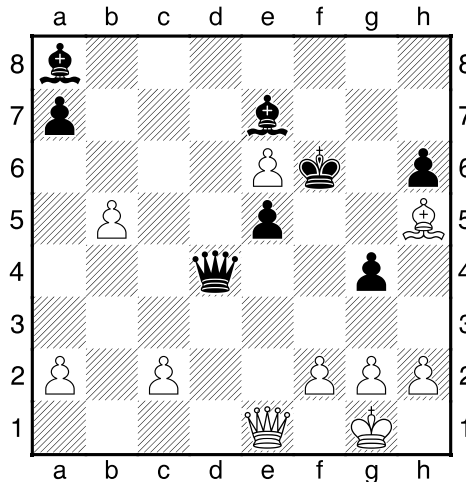
27.b4! [27.Cc4 Dc7 28.Cd6 Ag7 29.Cb5 Db8 30.Cxa7 Td8-+] 27...c4 28.b5! Δ♗b4 [28.Cxc4] 28...f5 29.Cxc4 Rf6 30.exf5?-+ Diagrama



[Δ30.Cxe5! Ac5 (30...Rxe5?? 31.Dd4+ Rf4 32.g3#; 30...Dxe5 31.Dd8+ Rg7 32.Td7+ Rg8□ 33.Af7+ Rh7 34.Ag6+ Rg8□ 35.Af7+=; 30...Axe4 31.Dd4! Dxe5 32.Dd8+ Rg7 33.Td7+ Rg8=) 31.Cf7 Tc8 32.exf5 Cd5! (32...Cc4 33.Dd7! Axf2+ (33...exf5 34.Cxh6 Cd6 35.Txd6+ Axd6 36.Dxf5+ Re7 37.Dxg5+ Rd7 38.Dg7+ Re6 39.Ag4+ Rd5 40.Df7+ Rc5 41.Df5+-) 34.Rxf2 Db6+ 35.Re2 De3+ 36.Rf1 Cb6 37.Dxe6+ Dxe6 38.fxe6 Txc2 39.Te1 Axx2+ 40.Rg1 Cd5±) 33.fxe6 Df4 34.Cxh6 Dxd2 35.Txd2 Ab4♠]

Estudio Casero Defensa Owen (B00) - Por el MF Job Sepúlveda

30...Ae7! 31.Cxb6 [31.fxe6 Td8 32.De2 Txd1+ 33.Dxd1 Cxc4 34.Dd3 e4 35.Dxc4 De5-+] 31...Dxb6 32.fxe6 Td8+ 33.De1 Txd1 34.Dxd1 Dd4 35.De1 [35.Dxd4 exd4+- ♭] 35...g4 Diagrama



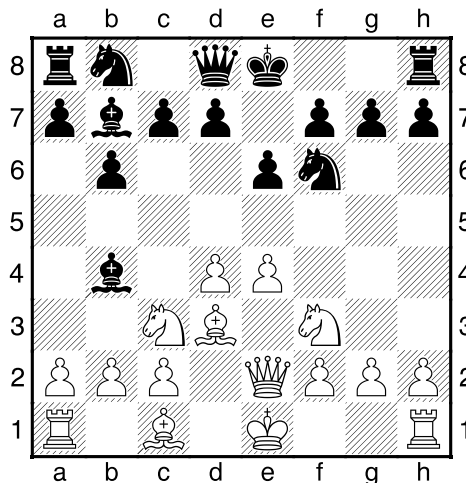
[35...Rxe6; 35...g4 36.Dc1 (36.De2 Da1+ 37.Df1 Dxf1+ 38.Rxf1 Rg5 39.Af7 Ad5-+) 36...Rf5 37.c4 Ac5 38.Dc2+ Ae4 39.De2 Da1+ 40.Df1 Dxf1+ 41.Rxf1 Ad3+-+] 0-1

Kovalev,Andrei (2495) – Minasian,Artashes (2580) [B00]

Cappelle op 12th (7), 1996

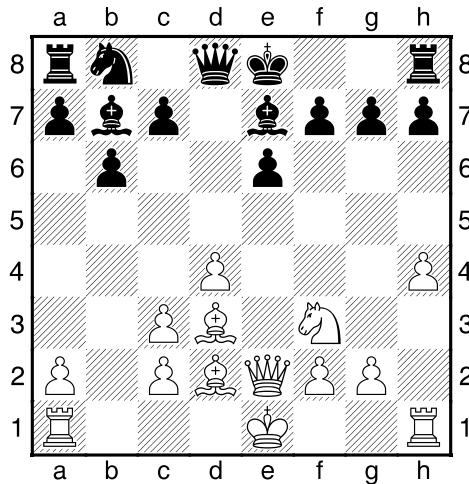
[Kovalev,A]

1.e4 b6 2.d4 Ab7 3.Cc3 e6 4.Cf3 Ab4 5.Ad3 Cf6 6.De2 Diagrama

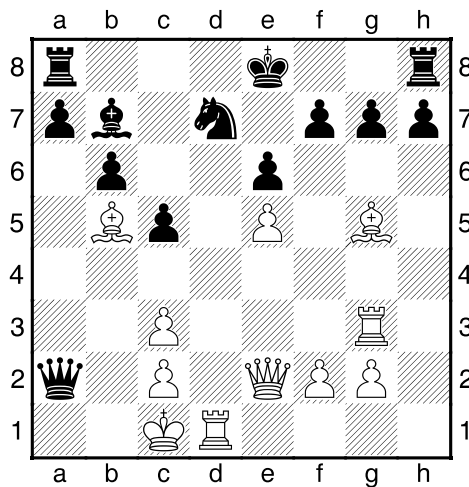


[6.e5!? Cd5 7.0-0 Cxc3 8.bxc3 Ae7 (8...Axc3 9.Tb1N) 9.Ce1!± Kovalev,A-Chernyshov,K/Dresden/1994/; 6.Ag5!?] 6...d5 7.exd5 Cxd5 8.Ad2 Cxc3 9.bxc3 Ae7 10.h4!? Diagrama

Estudio Casero Defensa Owen (B00) - Por el MF Job Sepúlveda

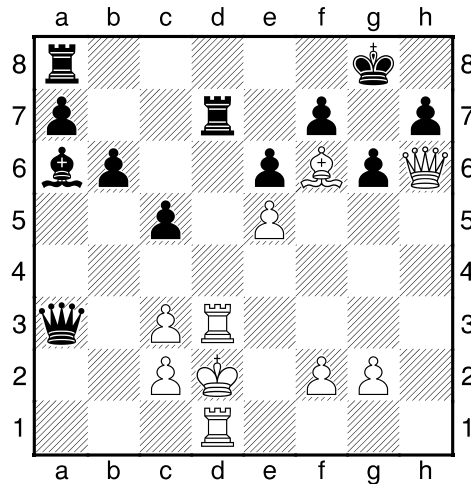


[10.0-0!? 0-0 11.h4!? Cd7 (11...Axf4 12.Ae4†) 12.Ae4±] 10...Cd7 11.Th3 c5?! [11...Ad6!?] 12.Tg3 Af6 [12...0-0 13.Ah6 Af6 14.Cg5†; 12...g6 13.h5±] 13.Ce5 Axe5 [13...Cxe5 14.dxe5 Axf4 15.Txf7±; 13...Dc7!? 14.Ab5 Axe5 15.dxe5 0-0-0 16.Txf7 Cxe5⇒] 14.dxe5 Dxh4? [14...Dc7!?] 15.0-0-0 Da4?! [15...0-0-0!? 16.Ag5 (16.Txf7!?)±] 16...Da4 17.Axd8 Txd8♞] 16.Ab5 Dxa2 [16...Da3+ 17.Rb1 0-0-0 18.c4+-] 17.Ag5+-
Diagrama



17...Ac8 18.Dd3 0-0 [18...Dd5 19.c4 Dd4 20.c3!+-] 19.Axd7 Aa6 20.De3 g6 21.Af6 Da3+ 22.Rd2 Tfd8 23.Dh6 [23.Re1+-] 23...Txd7+ 24.Td3 Diagrama

Estudio Casero Defensa Owen (B00) - Por el MF Job Sepúlveda



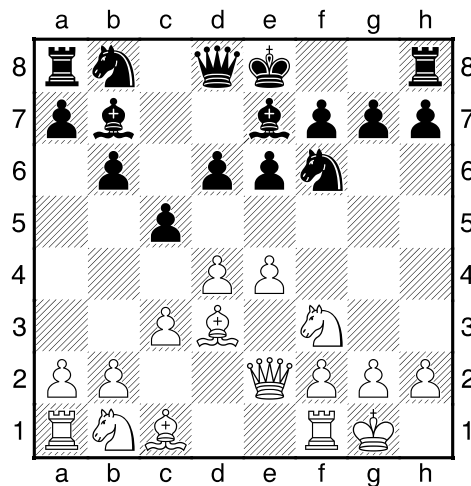
[24.Td3 Txd3+ 25.cxd3 Db2+ 26.Re3+-] 1-0

Macieja, Bartłomiej (2490) – Markowski, Tomasz (2525) [B00]

Rubinstein mem 35th Polanica Zdroj (7), 24.08.1998

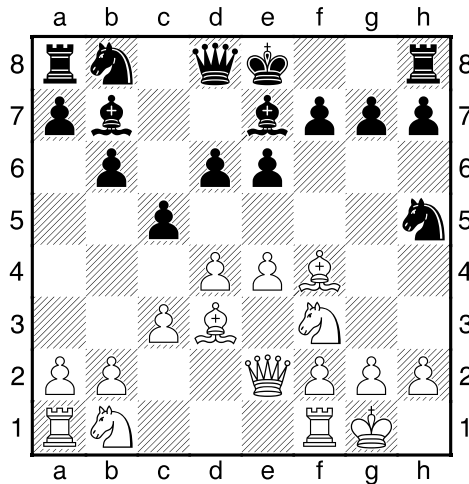
[Mueller, Karsten]

1.e4 b6 2.d4 Ab7 3.Ad3 e6 4.Cf3 c5 5.c3 Cf6 6.De2 Ae7 7.0-0 d6 Diagrama

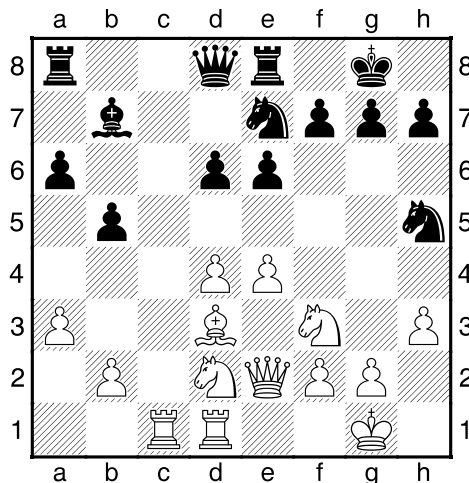


[7...Cc6 8.a3 Ca5 9.Cbd2 c4 10.Ac2 Dc7 11.Te1 b5 (11...0-0 ½-½ Ubilava,E-Psakhis,L/Manresa Terres Catalanes (3) 1996/CBM 56 (11)) 12.Tb1 a6 13.Cf1 h6 14.Cg3± 1-0 Kuipers,E-Rogers,I/Breda 1997/EXP 58 (45)] **8.Af4** [8.Ag5 h6 (8...Cbd7 9.Cbd2 h6 10.Axf6 Axf6 11.Aa6 Axa6 12.Dxa6 0-0= ½-½ Lukov,V-Kengis,E/Muenster 1990/EXT 90op2 (20)) 9.Ah4 (9.Axf6? Axf6̄ (King) 0-1 Schuh,F-Kengis,E/Vienna 1990/CBM 21/[King] (50)) 9...Ch5 10.Axe7 Dxe7 11.Ab5+ Cc6 12.De3 Cf6 13.Cbd2 0-0 14.h3± ½-½ De Sousa,J-Giffard,N/Paris 1993/TD 93/04 (52); 8.Cbd2 cxd4 9.cxd4 Cbd7 10.a3 a6 11.b4 Db8 12.Ab2 0-0 13.g3 Tc8 ½-½ Marciano,D-Giffard,N/Strasbourg 1992/EXT 92ch2 (13)] **8...Ch5?!**IN Diagrama

Estudio Casero Defensa Owen (B00) - Por el MF Job Sepúlveda

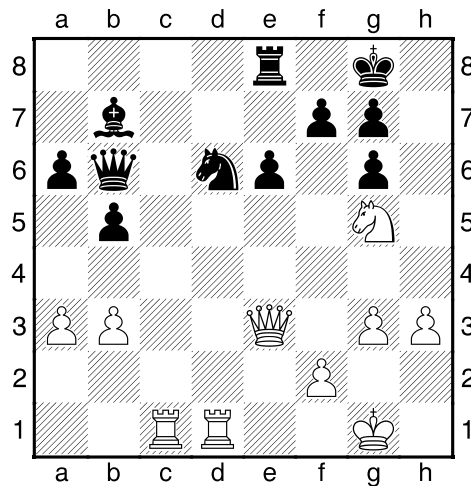


[8...Cbd7 9.Cbd2 a6 10.Tfd1 cxd4 11.cxd4 Cf8?! 12.h3 Cg6 13.Ah2±/± 1-0 Fritze,B-Edel,T/OLNW 1992/BIG 90 (46)] 9.Ae3 Cf6 10.Cbd2 Cc6 11.h3 0-0 12.a3 Te8 13.Tfd1 cxd4 14.cxd4 a6 15.Tac1 b5 16.Ag5 Ch5 17.Axe7 Cxe7?!± Diagrama

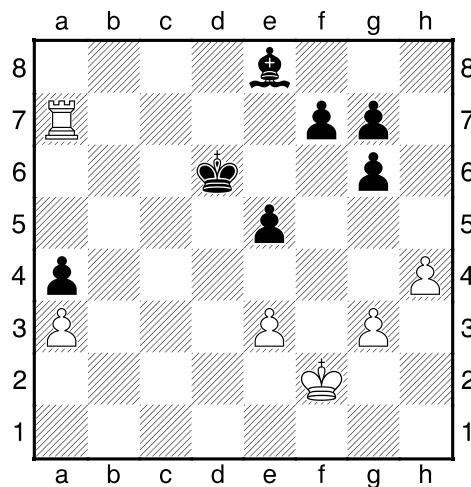


[Δ17...Dxe7] 18.g3 Cg6 19.Ab1! Db6 20.Cg5 Cf6 21.e5! Cd7 22.Axg6 hxg6 23.Cde4! dxe5?! [23...f6!?] 24.dxe5 Cxe5? [24...Ad5! 25.Cc3 (25.Cd6?! Tf8 26.Txd5? exd5 27.Dg4 Cxe5 28.Dh4 Cf3+ 29.Cxf3 f6!+- (29...Dxd6? 30.Cg5 Tfe8 31.Dh7+ Rf8 32.Dh8+ Re7 33.Dxg7 Rd7 34.Cxf7 Te7 35.f4∞)) 25...Db7±] 25.Cd6 Cc4 26.Cxe8 Txe8?! [26...Dc6! 27.De4 Dxe4 28.Cxe4 Axe4 29.b3!± (29.Cc7? Ta7 30.Td8+ Rh7 31.Td7 Ac6!±; 29.Cd6? Af3 30.Td3 Ae2 31.Td4 e5 32.Td5 Td8 33.Cf5 Txd5 34.Ce7+ Rh7 35.Cxd5 Cxb2= !±)] 27.b3! Cd6 [27...Cxa3? 28.Td7+-] 28.De3!+- Diagrama

Estudio Casero Defensa Owen (B00) - Por el MF Job Sepúlveda



28...Dxe3 [28...Dd8? 29.Cxf7! Rxf7 30.Df4+-] 29.fxe3 Ad5 30.Tc7 a5 [30...f6 31.Cxe6 Axe6 32.Txd6+-]
 31.Td7 Ce4 32.Cxe4 Axe4 33.Td8 Rf8 34.T1d7 Txd8 35.Txd8+ Re7 36.Tb8 Ac6 37.Tb6 Rd6 38.Ta6 a4
 [38...Rc7 39.Ta7+ Ab7 40.Txa5 Rb6 41.b4 Ac6 42.h4 e5 43.Rf2 f6 44.Re2 Ae4 45.a4 bxa4 46.Txa4 Rb5
 47.Ta7+-] 39.bxa4 bxa4 40.Ta7 Ae8 41.h4 e5 42.Rf2 Diagrama



1-0

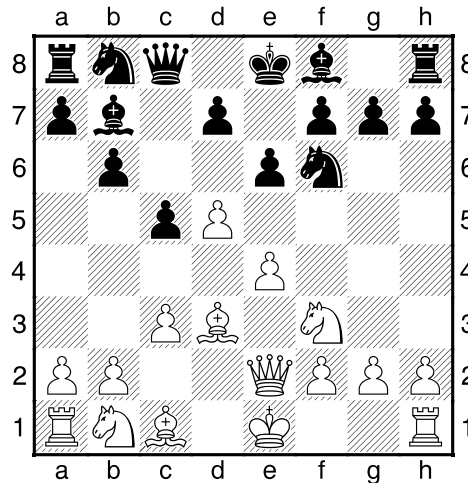
Estudio Casero Defensa Owen (B00) - Por el MF Job Sepúlveda

Baklan,Vladimir (2585) – Kopylov,Mihail (2385) [B00]

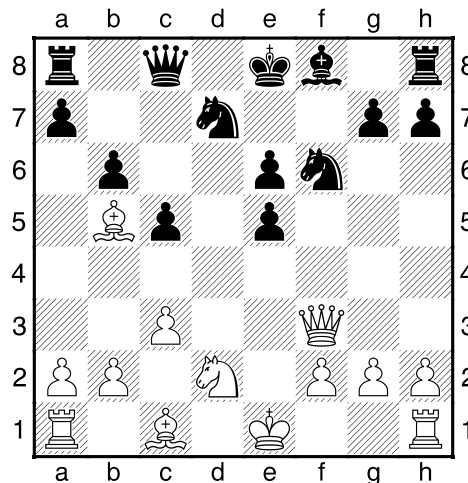
Donetzk zt (2), 03.11.1998

[Mueller,Karsten]

1.e4 b6 2.d4 Ab7 3.Ad3 Cf6 4.De2 e6 5.Cf3 c5 6.c3 Dc8 [6...cxd4 7.cxd4 Ab4+ 8.Cbd2 d5 9.e5 Cfd7 10.0-0 a5 11.Td1± ½-½ Huebner,R–Larsen,B/Bugojno 1978/MCL 05 (48); 6...Ae7 7.0-0 Cc6 8.a3± 0-1 Wahls,M–Forster,R/Biel 1994/CBM 43/[Ernst] (37)] 7.d5!N Diagrama



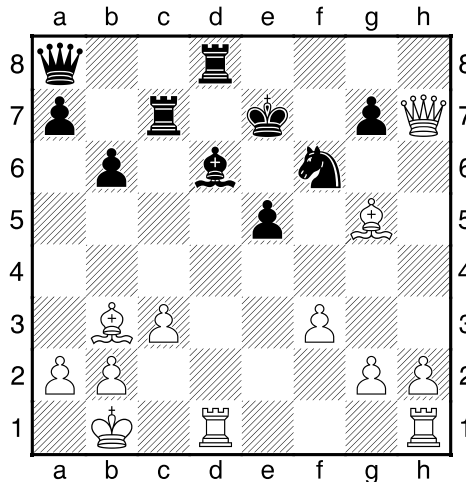
[7.0-0 Aa6=± 1-0 Kierzek,M–Tomic,D/Dortmund 1978/MCL 07 (44)] 7...d6 [7...Aa6 8.c4] 8.Ab5+ Cbd7 9.dxe6 fxe6 10.e5! Axf3 [10...dxe5? 11.Cxe5 Axc2?! 12.Tg1 Ad5 13.c4 Ab7 14.Ag5+–] 11.Dxf3 dxe5 12.Cd2± Diagrama



[12.Dh3 Rf7] 12...Ae7 [12...a6? 13.Ac4±] 13.Aa6 Dd8 14.Dc6 Rf7?! [14...0-0 15.Dxe6+ Rh8±/±] 15.Ac4 Cf8 16.Cf3 Ad6 17.Db7+! Rg8 [17...C6d7 18.Cg5+ Re7 19.Ce4±] 18.Cg5 De8 19.Cxe6 Cxe6 20.Axe6+ Rf8 21.Ab3 Tc8 22.Ae3 Tc7 23.Da6 c4 24.Axc4 Dc6 25.0-0-0 Re7?! [25...Dxc4 26.Dxc4 Txc4 27.Txd6± /+–; 25...Dxc4?! 26.Ab3± (26.Txd6 Dxh1+ 27.Td1 De4 28.Da3+ (28.Td8+ Re7 29.Txh8 Dxc4=) 28...Re8 29.Ab5+ Rf7 30.Db3+ Re7 31.Da3+=)]

Estudio Casero Defensa Owen (B00) - Por el MF Job Sepúlveda

26.Ab5 Da8 27.f3 Thc8 28.Rb1 Cd5 29.Ag5+ Re6?! 30.Aa4 Cf6 31.Dd3 Td8 32.Ab3+ Re7 33.Dxh7
Diagrama



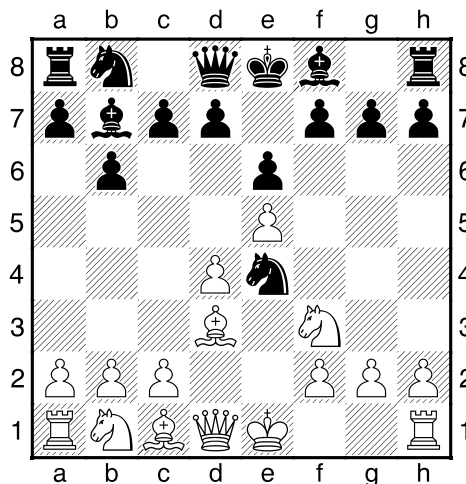
1-0

Wells, Peter K (2483) – Blatny, Pavel (2512) [B00]

Fraenkische GM 1st Pulvermuehle (9), 22.01.2000

[Mueller, Karsten]

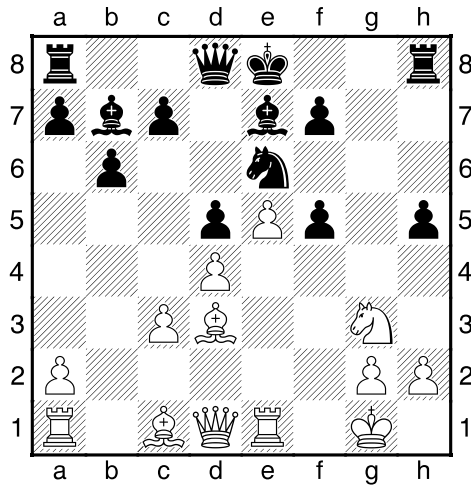
1.e4 b6 2.d4 Ab7 3.Ad3 e6 4.Cf3 Cf6 5.e5 Ce4 Diagrama



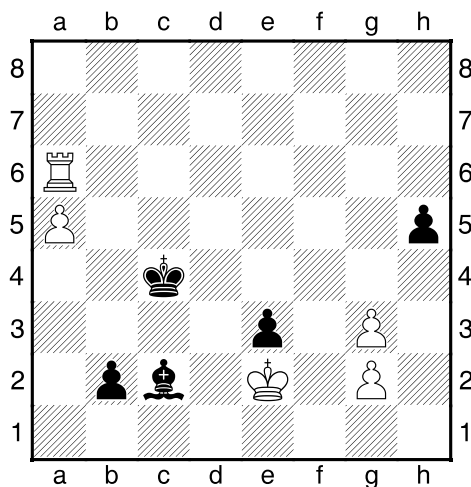
[5...Cd5 6.0-0 (6.a3 c5 7.c4 Ce7 8.dxc5 bxc5 9.0-0± ½-½ Ristic,N-Nikolic,Z/Smederevska Palanka 1982/MCL 03 (40)) 6...Ae7 7.a3 c5 8.De2 Cc6 9.c4 Cc7 10.dxc5 bxc5 11.Cc3± 1-0 Valenti,G-Magrin,A/Reggio Emilia7778 1977/MCD-r7 (53)] **6.0-0** [6.De2 d5 7.Cbd2 Cxd2 8.Axd2 c5 9.c3 Ae7 10.h4 Cc6 11.Ag5± 1-0 Kolago,M-Kiseleva,N/Koszalin POL 1999 (39)] **6...Ae7 7.c4 d5 8.cxd5 exd5** [8...Dxd5? 9.Te1 f5 10.exf6 Cxf6 11.Cc3±] **9.Te1 Cd7 10.Cc3 Cxc3 11.bxc3 Cf8!?** [11...0-0 12.Dc2 h6 13.Af5±] **12.Cd2 Ce6 13.Cf1 g6 14.f4 h5 15.f5** [15.Dc2 Dd7 16.Axg6? fxg6 17.Dxg6+ Rd8]

Estudio Casero Defensa Owen (B00) - Por el MF Job Sepúlveda

15...gxf5 16.Cg3± Diagrama

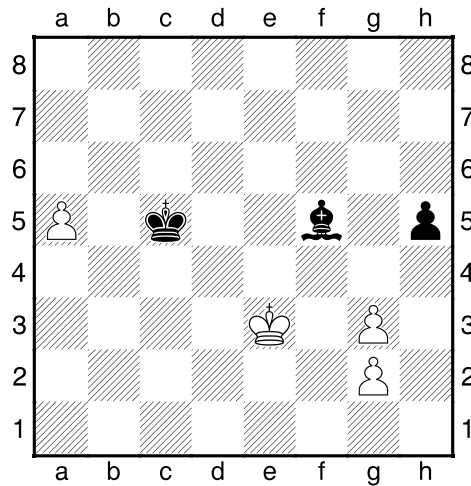


16...Ah4 17.Axf5 Axc3 18.hxc3 De7 19.Da4+ c6 20.Da3 Dxa3 21.Axa3 Cg7 22.Ad3 Ac8 23.Tf1 Ae6
 24.Tf6 [24.Ac1!?!] 24...0-0-0 25.Ac1 Tdg8 26.Tf4 Rd7 27.a4 Ce8 28.Rf2 Tg4 29.Ae2 Tg7 30.Th4?! Ag4!
 31.Ad3 f6 32.Af4 fxe5 33.Axe5 Tf8+ 34.Rg1 Tg5 35.Af4 Tgg8 36.a5 b5 37.Tf1 Cd6 38.Ah7 Tg7 39.Ad3
 a6 40.Th1 Te7 41.Rh2 Ce4 42.Ah6 Txf1 43.Txf1 Cxc3 44.Ag5 Ce4 [44...Te6 45.Tf7+ Re8 46.Ta7±]
 45.Axe7 Rxe7 46.Axe4 dxe4 47.Rg1 e3 48.Tc1 Rd6 49.Tc5?! [49.Rf1] 49...b4 50.Tc4 b3 51.Tb4 Ad1
 52.Rf1 c5 53.Tb6+ Rd5 54.dxc5 Rxc5 55.Re1 [55.Txa6? Ac2 56.Re2 (56.Tb6 Ad3+ 57.Re1 Ab5 58.Rd1
 e2+ 59.Rd2 b2+) 56...b2+] 55...Ac2! [55...e2 56.Rd2 Rc4 57.Tb8=] 56.Re2 Rd4 57.Td6+ Rc4 58.Txa6?
 [58.Tc6+! Rb5 (58...Rd4 59.Td6+ Re4 60.Te6+ Rd4 61.Td6+ Rc3 62.Tc6+ Rb4 63.Txa6=; 58...Rb4 59.Txa6
 b2 60.Tb6+=) 59.Tb6+ Rxa5 60.Tb8 Ra4 61.Rxe3 Ra3 62.Rd2 a5 63.Rc3 a4 64.Tb4 Af5 65.Tb8 Ra2
 66.Tb4 (66.Tb6? Ac2 67.Tb4 a3 68.Tb5 Ad1+) 66...Ad7 67.Tb6 (67.Tb7? Ae6 68.Ta7 (68.Tb6 a3 69.Txe6
 b2+) 68...a3 69.Rb4 b2 70.Txa3+ Rb1 71.Te3 Ra1+) 67...Ac6 (67...Ra1 68.Tb7 Ac6 69.Tb6) 68.Tb4
 (68.Txc6? b2 69.Tb6 b1D 70.Txb1 Rxb1 71.Rb4 Rc2+); 58.Rxe3 b2 59.Tc6+ Rb4 60.Tb6+ (60.Txa6 Aa4+)
 60...Ra3 61.Txb2 Rxb2 62.g4 hxg4 63.Rf4 Ad1+] 58...b2+ Diagrama



Estudio Casero Defensa Owen (B00) - Por el MF Job Sepúlveda

59.Tc6+ [59.Tb6 Ab3+ (59...b1D? 60.Txb1 Axb1 61.Rxe3 Rb5 62.Rf4=)] 59...Rd4 60.Td6+ Rc5 61.Tb6 b1D 62.Txb1 Axb1 63.Rxe3 Af5 Diagrama



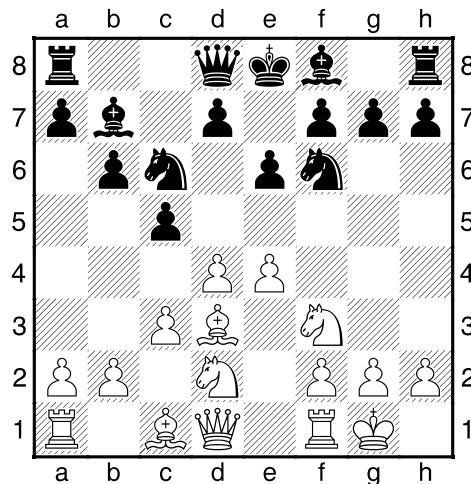
0-1

Roselli, Juan Pablo (2110) – Blatny, Pavel (2535) [B00]

Najdorf mem Great fin Buenos Aires (2.1), 11.09.2000

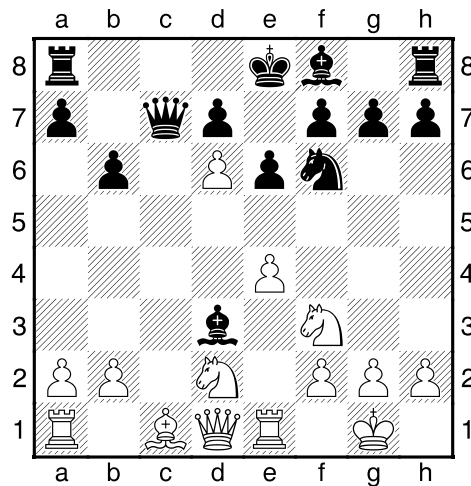
[Mueller, Karsten]

1.e4 b6 2.d4 Ab7 3.Ad3 Cf6 4.Cd2 e6 5.Cgf3 c5 6.c3 Cc6 7.0-0± Diagrama

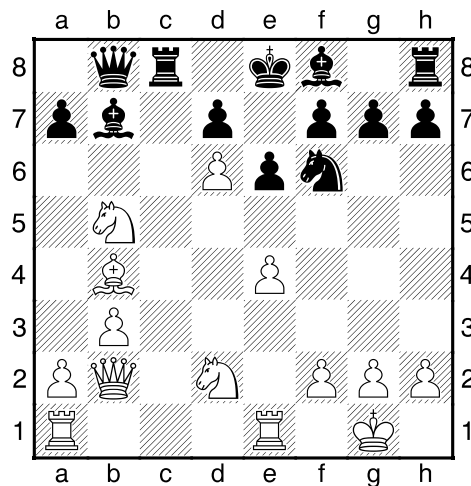


[7.a3 d5 8.e5 Cd7 9.0-0±] 7...cxd4 8.cxd4 Cb4 9.Ab1 Aa6 10.Te1 Cd3 [10...Tc8 11.Cf1±] 11.Axd3 Axd3 12.d5!?N [12.e5 Cd5 13.Ce4 Axe4 14.Txe4 Tc8±] 12...Dc7? [12...Ac5] 13.d6!± Diagrama

Estudio Casero Defensa Owen (B00) - Por el MF Job Sepúlveda

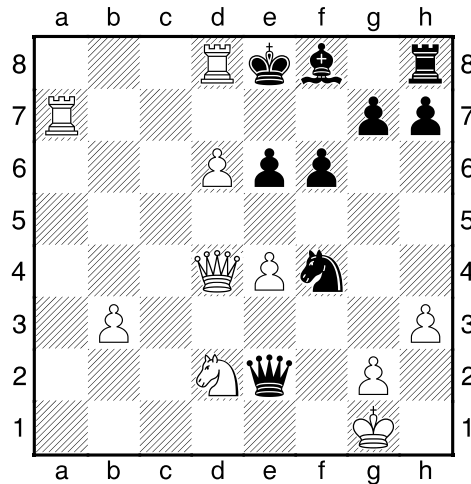


13...Db7 14.Da4 Tc8 15.Dd4 Aa6 16.b3 Db8 17.Aa3 Tc6 18.Db2 b5 19.Ab4! Ab7?! 20.Cd4 Tc8 [20...Tb6 21.e5 Cd5 22.Ac5 Ta6 23.Cxb5+-] 21.Cxb5+- Diagrama



21...Aa6 22.a4 Axb5 23.axb5 Dxb5 24.Tec1 Td8 25.Dd4 Cg4 [25...a6 26.Ta5+-] 26.h3 Ce5 27.Aa5! [27.Ta5? Cc6] 27...f6 [27...Ta8 28.Dxa7 Db8 29.Dxb8+ Txb8 30.Ac7 Tc8 31.b4+-] 28.Axd8 Rxd8 29.Txa7 Re8 30.Tcc7 De2 31.f4 Cd3 32.Txd7 Cxf4 33.Td8+ Diagrama

Estudio Casero Defensa Owen (B00) - Por el MF Job Sepúlveda



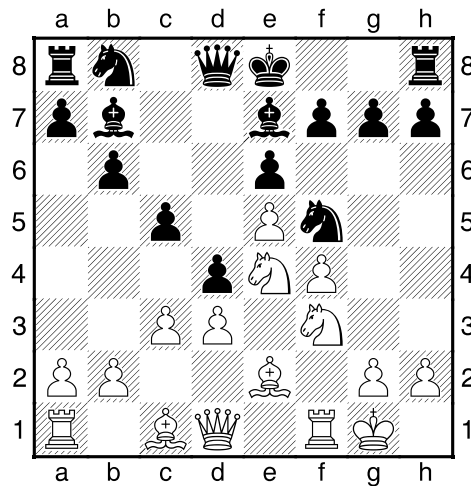
[33.Td8+ Rxd8 34.Db6+ Rc8 (34...Re8 35.Db8#) 35.d7#] 1-0

Hebert, Jean (2398) – Glinert, Stephen (2278) [B00]

CAN-ch zt Richmond (9), 2002

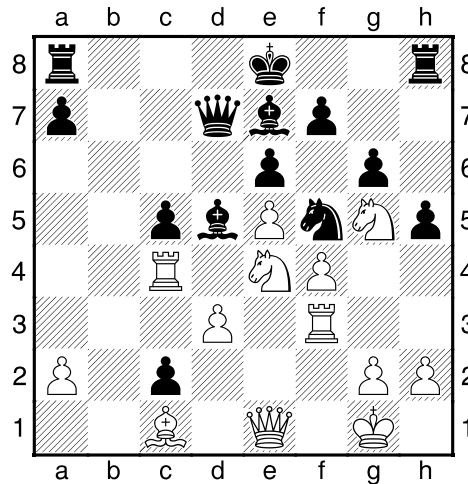
[Glinert/Hebert]

1.e4 b6 2.d3!? Ab7 3.f4 e6 4.Cf3 d5 5.e5 c5 6.c3 d4!? 7.Cbd2 Ce7 8.Ce4 Cf5 9.Ae2 Ae7 10.0-0±
Diagrama

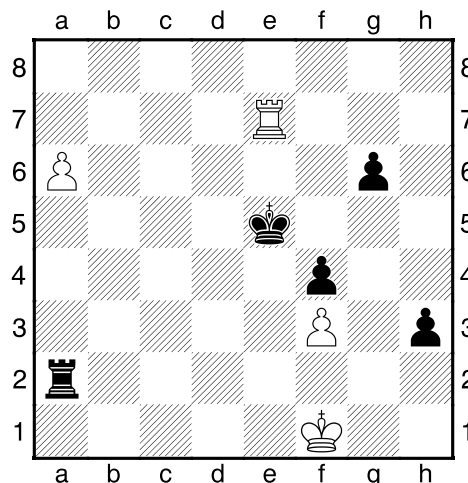


[10.g4 Ch4 11.0-0 Cxf3+ 12.Axf3 Cc6] 10...h5 11.Cfg5 g6 12.Af3 Cc6 13.Tb1 Dd7 14.b4? dxc3 15.bxc5
SG: Not Nxc3? Qd4+. 15...Ccd4 16.Tb4 c2 17.De1 Cxf3+ 18.Txf3 bxc5 19.Tc4 Ad5 Diagrama

Estudio Casero Defensa Owen (B00) - Por el MF Job Sepúlveda

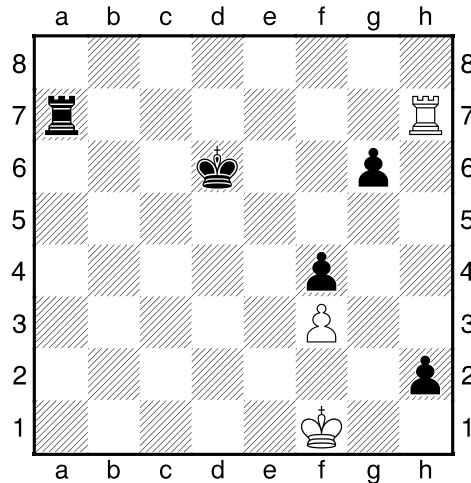


20.Txc2 [20.Tc3] 20...Cd4 21.Tff2 Cxc2 22.Txc2 Axe4 23.Cxe4 Dxd3!? 24.Td2 Dc4 25.Cd6+ Axd6
26.exd6 0-0 [26...0-0-0 27.Aa3] 27.Ab2 Dxf4 SG: Insurance?! 28.Ae5 Dc4?! [28...Db4 29.Df2 (29.De3
Db1+ 30.Rf2 Df5+) **29...Db1+]** **29.De3 f6 30.Ac3 Tab8 31.h3 e5?! [31...Tf7!] 32.Aa5 Df4 [32...Tb1+ 33.Rh2**
Dc1 34.Dh6 Dg1+ 35.Rg3 h4+! **36.Dxh4 (36.Rxh4 De1+ 37.Rg4 De4+ 38.Rg3 g5!) 36...De1+ 37.Tf2!**
(37.Rg4 De3) 37...Dxa5 38.De4 f5 (38...Dc3+ 39.Rh2 Dc1 40.Dxg6+ Rh8 41.Tf5) 39.Dxb1 Dc3+ 40.Rh2
Dd4] **33.Dxf4 exf4 34.d7 Tbd8 35.a3! [35.a4] 35...Rf7 36.Axd8 Txd8 37.Td5 Re6 [37...c4 38.Tc5 Txd7**
39.Txc4 g5 40.Ta4] 38.Txc5 Txd7 39.Ta5 h4 JH: 'Black's main idea is to push his g/pawn all the way to g3
 and then go after pawn/g2. However, this cannot be achieved against a responsible defense **[39...g5 40.h4]**
40.Rf2 f5 41.Ta6+ Rf7 42.Ta5?! [42.Ta4! no such try is possible and White draws easily after 42...g5 43.Ta6
Tb7 44.Ta4 Tb3 (44...Rg6 45.Ta6+ Rh5 46.Ta5) 45.Txa7+ Rg6 46.Ta6+ Rh5 47.Ta5] 42...Rf6 43.Ta6+ Rg5
44.Ta4 '!' [44.a4? Td2+ 45.Rf3 Td3+ 46.Rf2 Tg3 47.Txa7 f3 48.gxf3 Rf4] 44...Td2+ 45.Rf3 Td3+ 46.Rf2 Tg3
'! 47.Txa7 f3 48.gxf3 Txb3 49.Rg2! Tg3+ 50.Rf2 Th3 51.Rg2 Tg3+ 52.Rf2 f4 53.Th7 h3 54.a4 Rf5 55.a5
Re5 56.a6 Tg2+ 57.Rf1 Ta2 58.Te7+?? Diagrama



Estudio Casero Defensa Owen (B00) - Por el MF Job Sepúlveda

The losing move. I became very worried about the Black king reaching square/e3 and wanted to prevent this possibility by giving a series of checks on the d/ and e/files if necessary [58.Txh3 Rd4 59.Th6 Txa6 60.Rf2 (60.Rf2 Rd3 61.Th8 Ta2+ 62.Rg1 Re3 63.Tg8 Rxf3 64.Txg6 Ta1+ 65.Rh2 Rf2 66.Tb6 (66.Tg2+ Re3 67.Tb2) 66...Te1 67.Tb2+ Te2 68.Tb3 f3 69.Tb8 Rf1+ 70.Rg3 f2 71.Rf3!)] 58...Rd6 !' 59.Th7 [59.Tg7 Ta1+ (59...h2 60.Th7 Re5 61.a7 Txa7 62.Txh2) 60.Rf2 h2] 59...h2 60.a7 [60.Th6 Rc7 ; 60.Re1 Ta1+] 60...Txa7!
Diagrama



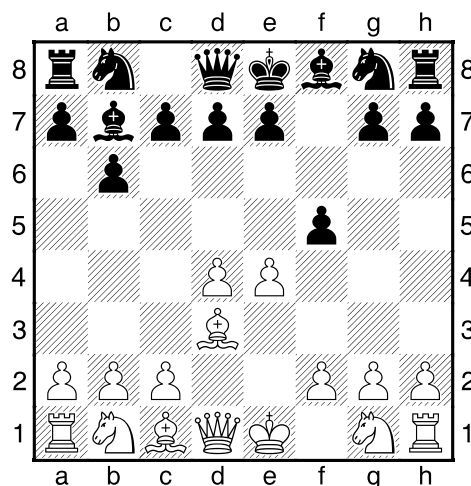
[60...Txa7 61.Txh2 Ta1+] 0-1

Svidler, Peter (2713) – Chernyshov, Konstantin (2524) [B00]

Voronezh m (3), 14.06.2003

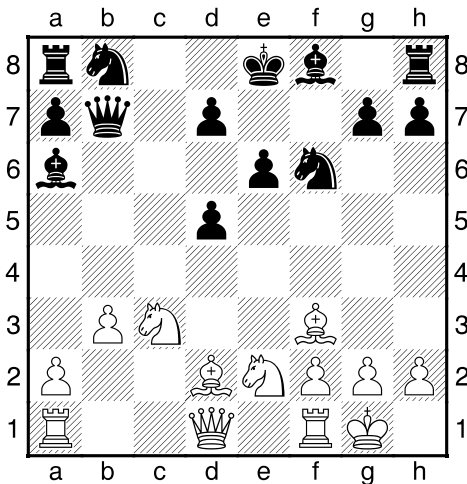
[Mueller, Karsten]

1.e4 b6 2.d4 Ab7 3.Ad3 f5? Diagrama

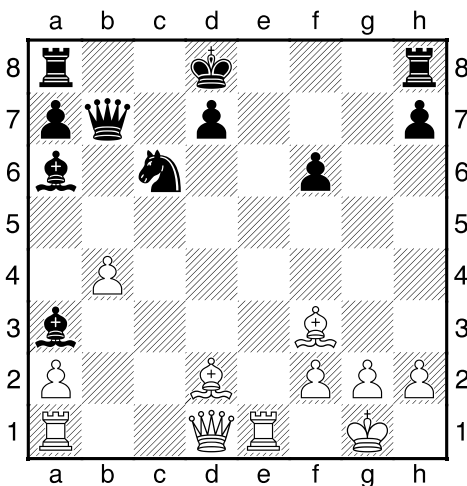


Estudio Casero Defensa Owen (B00) - Por el MF Job Sepúlveda

4.d5 [4.exf5! Axf2 5.Dh5+ g6 6.fxf6 Ag7 (6...Cf6?? 7.gxh7+ Cxh5 8.Ag6#) 7.gxh7+ Rf8 8.Cf3 (8.Ce2!?: 8.hxg8D+!?) 8...Cf6 9.Dg6 Axf1 (9...Axf3 10.Tg1 Txf7 11.Dg3 Ae4 12.Axe4 Cxe4 13.Df3+--)) 10.Ah6 Txf7 11.Cg5 Axf6 12.Cxf7+ Cxf7 13.Dxf6+ Rf7 14.Dxf7+ Re6 15.Dh6+ Rd5 16.Cc3+ Rxd4 1-0 Roederer,K-Nefzer,W/Lauda 1986/GER (16)] **4...fxe4** [4...Cf6!?:] **5.Axe4 Cf6 6.Af3 c6 7.c4** [7.Cc3!?:] **7...Aa6 8.b3 b5 9.cxb5 Da5+ 10.Ad2 Dxb5 11.Ce2 cxd5 12.Cbc3 Db7 13.0-0 e6** Diagrama

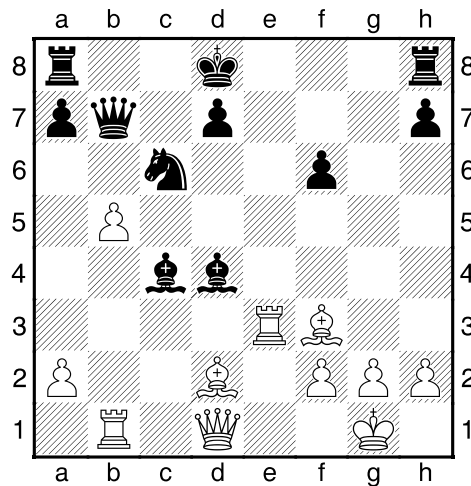


[13...e5? 14.Cxd5 Cxd5 15.Ag5±] **14.Te1 Cc6?! [14...Ad6 15.Cd4 Ae7∞ (15...0-0? 16.Cxe6 dxe6 17.Txe6 Dc6 18.Txf6 Axf2+ 19.Rxf2 Dxf6 20.Axd5+ Rh8 21.Df3±; 15...Rf7? 16.Ag5→) ; 14...Ae7 15.Ag5 Cc6∞] 15.Cxd5! exd5?! [15...Cxd5 16.Axd5 Ac5±] 16.Cf4+ Rd8? [16...Ce7! 17.Cxd5 Cfxd5 18.Ag5 Ab5 (18...Tc8? 19.Axd5 Db4 20.Te4+--)) 19.Axd5 Ac6 20.Dh5+ g6 21.Df3 Axd5 22.Df6±] 17.Cxd5 Aa3 [17...Cxd5 18.Axd5 Aa3 19.Dg4+--] 18.Cxf6 gxf6 19.b4!±** Diagrama

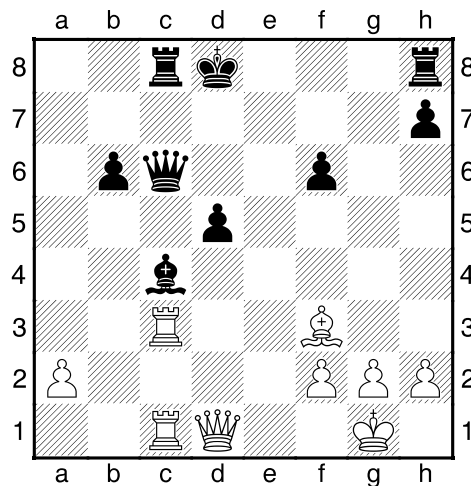


19...Ac4 20.Te3 [20.Tb1!? Da6 21.Af4 Tc8 22.Ag4+--] **20...Ab2 21.Tb1** [21.b5!→] **21...Ad4?** [21...Ae5 22.b5 (22.Ac3!?) 22...Axb5 23.Aa5+ Rc8 (23...Re7? 24.Ab4+ Rd8 25.a4+--)) 24.a4 Axa4 25.Dd3 Dxb1+ 26.Dxb1 Tb8 27.Dd3 Cxa5 28.Da6+±] **22.b5+--** Diagrama

Estudio Casero Defensa Owen (B00) - Por el MF Job Sepúlveda



22...d5 [22...Axb5 23.Aa5+ Rc8 24.Axc6 Dxc6 25.Dxd4 Tg8 26.g3+--; 22...Axe3 23.bxc6 Dc7 24.Axe3+--]
 23.bxc6 Dxc6 24.Aa5+ Ab6 25.Tc1 Tc8 26.Axb6+ axb6 27.Tec3 Diagrama



[27.Tec3 Dd7 (27...Re7 28.Txc4+--) 28.Axd5 b5 (28...Axd5 29.Txc8+ Dxc8 30.Txc8+ Rxc8 31.Dxd5+--)
 29.Df3+--] 1-0

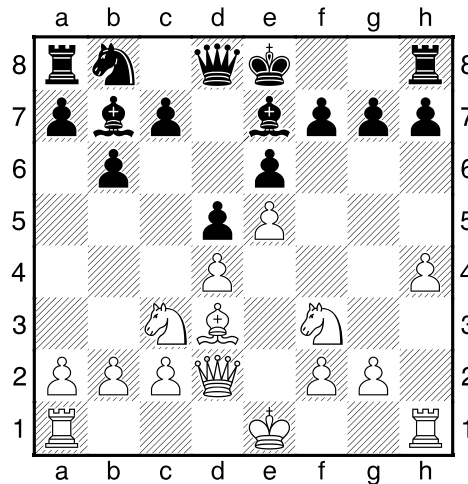
Estudio Casero Defensa Owen (B00) - Por el MF Job Sepúlveda

Berg,Emanuel (2527) – Blatny,Pavel (2475) [B00]

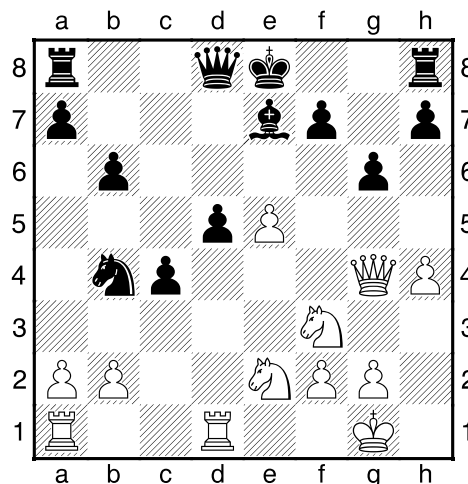
Bermuda-B (1), 25.01.2003

[Mueller,Karsten]

1.e4 b6 2.Cc3 Ab7 3.d4 e6 4.Cf3 Ab4 5.Ad3 Cf6 6.De2 d5 7.e5 Ce4 8.Ad2 Cxd2 9.Dxd2 Ae7 10.h4
Diagrama

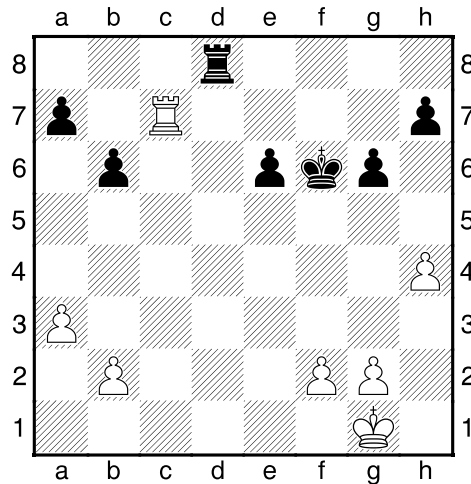


[10.0-0 c5 11.b3 Cc6 12.Ce2 0-0 13.c3 Tc8 14.De3 cxd4 15.Cfxd4 Cxd4 16.cxd4 Aa3 17.Dh3 h6 18.f4 f5 19.Tf3 Rh7 20.g4 g6 21.Tg3 ½-½ Delorme,A–Germes,A/Fouesnant 1997/EXT 2003 (21); 10.Ce2 c5 11.c3 Cc6 12.0-0 0-0 13.a3 c4 14.Ac2 b5 15.Ce1 a5 16.f4 f5 17.exf6 Axf6 18.Cf3 Db6 19.De3 Tae8 ½-½ Gollewsky,P–Jahn,C/Bad Blankenburg 1990/EXT 2003 (19)] 10...Aa6 11.Df4 Axd3 12.cxd3 c5 13.0-0 Cc6 14.Ce2 Cb4 [14...0-0!?] 15.Tfd1 c4 16.dxc4 dxc4 17.d5!? exd5 18.Dg4 g6 Diagrama

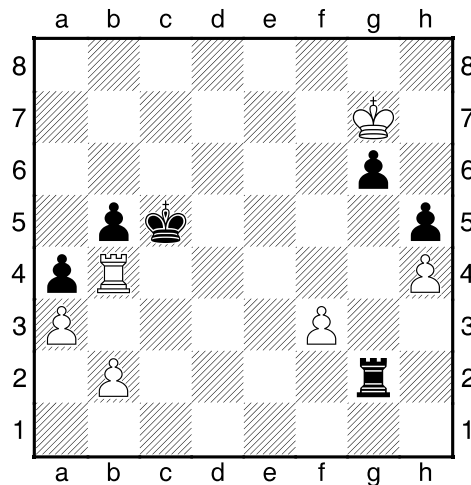


[18...0-0 19.Cf4 f5 20.Dg3♞] 19.Cf4 Dc8 20.Dg3 Df5 21.a3 Cd3 22.Cxd3 cxd3 23.Cd4 De4 24.Dxd3 Dxe5 25.Cc6 Df6 26.Cxe7 Rxe7 27.Te1+ [27.De3+!? Rf8 28.Dh6+ Dg7 29.Df4 Dxb2 30.h5 Te8 31.h6 De5 32.Db4+ De7 33.Txd5↑] 27...Rf8 28.Dxd5 Td8 29.De5 Rg7 30.Tac1 The8 31.Dxf6+ Rxf6 32.Tc6+ Te6 33.Texe6+ fxe6 34.Tc7= Diagrama

Estudio Casero Defensa Owen (B00) - Por el MF Job Sepúlveda

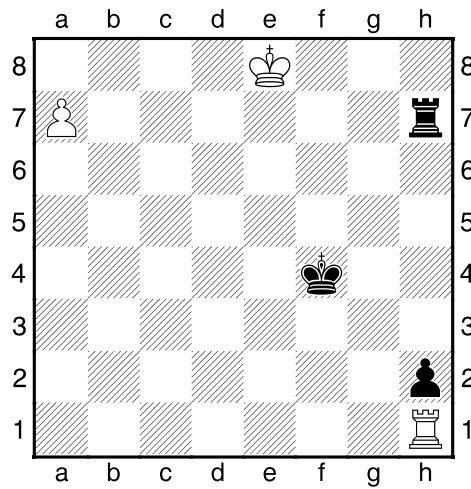


34...a5 35.Tb7 Td6 36.g3 h5 37.Rf1 Tc6 38.Re1 Re5 39.Rd2 Re4 40.Tf7 Td6+ 41.Re2 e5 42.Tc7 Rd4
 43.Tc1 Tf6 44.f3 a4 45.Td1+ Rc5 46.Re3 Td6 47.Tc1+ Rb5 48.Tc3 Td1 49.Re4 Tb1 50.Tc2 Te1+ 51.Rd5
 Tg1 52.Rxe5 Txc3 53.Rf6 Ra5 54.Td2 b5 55.Td4 Rb6 56.Tb4 Rc5 57.Tf4 Tg1 58.Tb4 Tg2 59.Rg7?!
 Diagrama

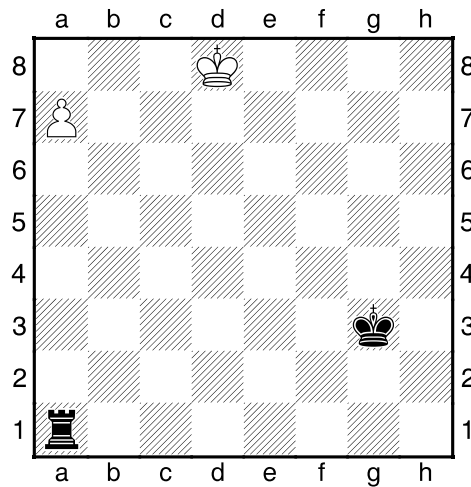


[59.b3=] 59...g5 60.hxg5 Txc5+ 61.Rh6 Tf5 62.b3 axb3 63.Txb3 h4 64.Rg6 Tf8 65.Rg5 h3 66.f4 Tg8+
 67.Rf6 Tf8+ 68.Rg5 Th8 69.Tb1 h2 70.Th1 Rd6 71.Rf5 Re7 72.Re5 Th6 73.Rd5 Rd7 74.Rc5 Th5+ 75.Rb6
 Re6 76.f5+ Rxf5 77.Rxb5 Re4+ 78.Rb6 Rd5 79.a4 [79.Rb5!?!=] 79...Rc4 80.Rc6 [80.a5? Th6+ 81.Rc7 Rb5
 82.Rd7 Rxa5 83.Re7 Rb4 84.Rf7 Rc3 85.Rg7 Th3 86.Rg6 Rd2 87.Rg5 Re3 88.Rg4 Th8 89.Rg3 Tg8+
 90.Rh3 Rf2-+] 80...Th6+ 81.Rd7 Rd5 [81...Rb4 82.Re7=] 82.a5 Th7+ 83.Re8 [83.Rc8? Rc6 84.Rd8 Rb5
 85.Re8 Rxa5 86.Rf8 Rb4 87.Rg8 Th3 88.Rg7 Rc3 89.Rg6 Rd2 90.Rg5 Re3 91.Rg4 Th8 92.Rg3 Tg8+
 93.Rh3 Rf2 94.Txh2+ Rf3-+] 83...Re5 [83...Rc6 84.Rf8 Rb5 85.Rg8 Th3 86.Rg7 Rxa5 87.Rg6=] 84.a6 Rf4
 85.a7? Diagrama

Estudio Casero Defensa Owen (B00) - Por el MF Job Sepúlveda



[85.Rd8 Rg3 (85...Re5 86.Txh2 Txh2 87.Rc7 Ta2 88.Rb7 Rd6 89.a7 Tb2+ 90.Rc8=) 86.Ta1 Ta7 (86...Th6 87.a7 Th7 88.Ta3+ Rf4 89.Ta4+ Re5 90.Ta5+ Rd6 91.Ta6+ Rc5 92.Ta5+ Rb6 93.Ta6+=) 87.Ta3+ Rg4 (87...Rf4 88.Th3=) 88.Ta4+ Rg5 89.Ta5+ Rg6 90.Ta1=] **85...Rg3 86.Ta1 h1D 87.Txh1 Txh1 88.Rd8 Ta1**
 Diagrama



0-1

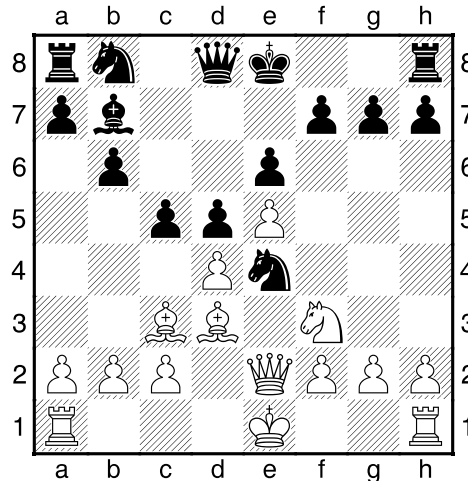
Estudio Casero Defensa Owen (B00) - Por el MF Job Sepúlveda

Rot, Yefim (2125) – Polyakov, Alex (2311) [B00]

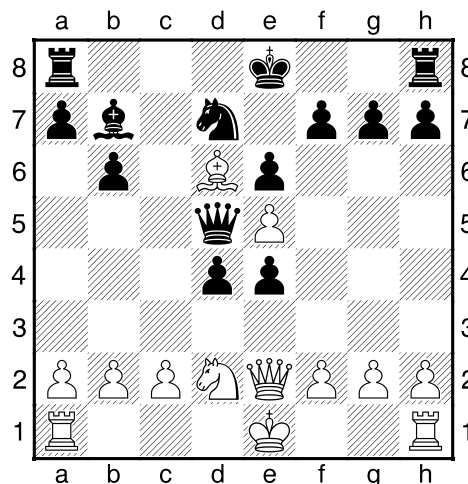
ISR–ch Tel Aviv (7), 01.12.2002

[Mueller, Karsten]

1.e4 b6 2.Cf3 Ab7 3.Cc3 e6 4.d4 Ab4 5.Ad3 Cf6 6.De2 d5 7.e5 Ce4 8.Ad2 Axc3 9.Axc3 c5!? Diagrama

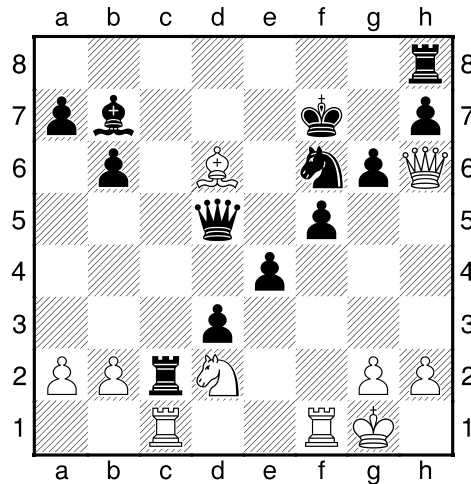


[9...0-0 10.Cd2 Cxc3?! 11.bxc3 c5 12.Dh5 h6± 0-1 Hopper,P–Neil,K/SCO 1994/CBM 42/[Neil] (26)]
10.Axe4?N [10.De3 Cxc3 (10...Cc6?! 11.Axe4 cxd4 (11...dxe4 12.Dxe4±) 12.Cxd4 Cxd4 13.Ad3 Cc6
 14.Dg3± 1-0 Bonvalot,I–De Witte,C/Clichy 1997/EXT 99 (44)) 11.bxc3 c4 12.Ae2 h6 13.Cd2= 0-1 Peters–
 Roth/Ciocco 1978/EXT 99 (42)] **10...dxe4 11.Cd2 cxd4 12.Ab4** [12.Cxe4? dxc3 13.Cd6+ Rf8 14.Cxb7 Dd5
 15.Cd6 cxb2 16.Tb1 Da5+ 17.Rd1 Dd5+ 18.Re1 Cc6⚡] **12...Dd5 13.Ad6?!** [13.Cc4 Aa6 (13...d3 14.cxd3
 exd3 15.Dg4∞) 14.Cd6+ Dxd6 15.Axd6 Axe2 16.Rxe2⚡] **13...Cd7⚡** Diagrama



14.f4?! [14.Dh5 h6 15.f3 exf3 16.0-0] **14...Tc8 15.Dg4 g6** [15...e3!?] **16.Dh4 f6 17.0-0?!** [17.Dh6 Rf7
 18.exf6 Cxf6 19.Ae5] **17...Txc2 18.Dh6 Rf7 19.Tac1 d3** [19...Txd2 20.Tc7 Txc2+ 21.Rh1 e3 22.Txd7+ Re8
 23.Te7+ Rd8 24.Td7+ Rxd7 25.Dg7+ Rc6 26.Dc7+ Rb5+] **20.f5?!** exf5 21.exf6 Cxf6 Diagrama

Estudio Casero Defensa Owen (B00) - Por el MF Job Sepúlveda



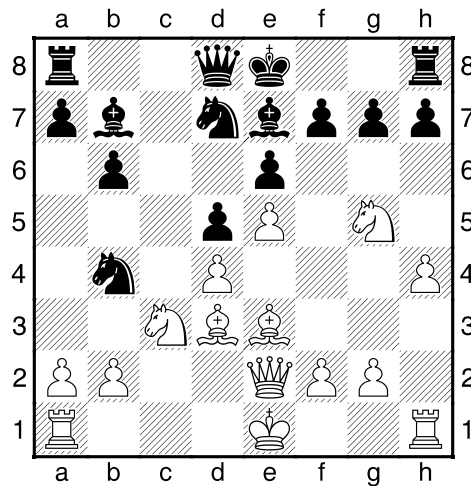
0-1

Jenni, Florian (2483) – Lau, Ralf (2491) [B00]

Bundesliga 0203 Germany (10.4), 08.02.2003

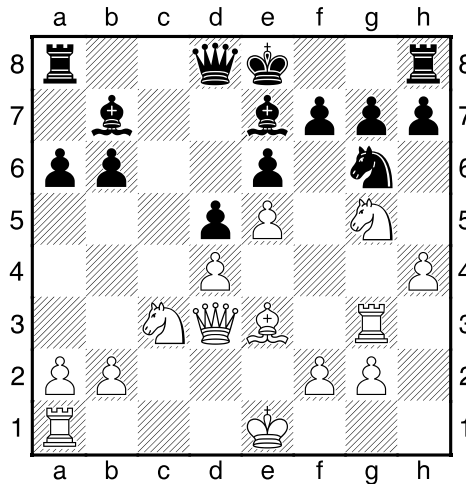
[Mueller, Karsten]

1.e4 b6 2.d4 e6 3.Cf3 Ab7 4.Ad3 Cf6 5.De2 d5 6.e5 Cfd7 7.c3 c5 8.Cg5 Ae7 9.h4 cxd4 10.cxd4 Cc6 11.Ae3 Cb4 12.Cc3 Diagrama

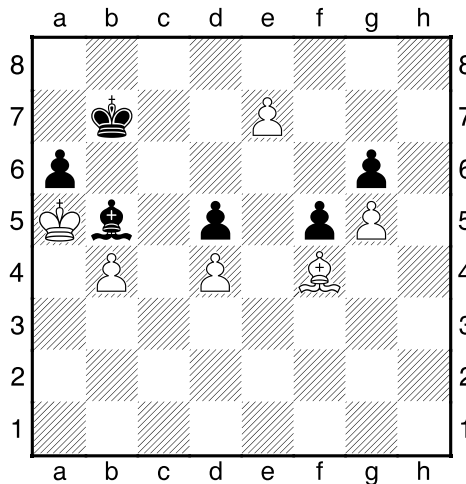


[12.Ab5?! a6 13.Aa4 Ac6 14.Axc6 Cxc6 15.Cc3 h6 16.Cf3 b5 17.Tc1 Tc8 18.g3 Da5 19.Cd2 Db6 20.Cb3 Ca5 21.Cxa5 Dxa5= 1/2-1/2 Ravi, T-Blatny, P/Calcutta 2000/CBM 74 ext (39); 12.Cxh7? a5 13.Cg5 Cxd3+ 14.Dxd3 Axc5 15.Axc5 Dxc5 16.hxg5 Txh1+ 17.Rd2 Aa6] 12...Cxd3+ 13.Dxd3 a6 14.Th3 [14.Cxh7? g6 15.Cf6+ Cxf6 16.exf6 Axf6] 14...Cf8 15.Tg3 [15.Cf3 Cd7 16.h5 h6 17.Tg3 Af8 18.Tc1±] 15...Cg6= Diagrama

Estudio Casero Defensa Owen (B00) - Por el MF Job Sepúlveda



16.De2 [16.h5?! Ch4̄] 16...Cxb4 17.Dh5 Cg6 18.Cxe6 fxe6 19.Txg6 hxg6 20.Dxh8+ Rf7 21.Dh3 Ab4
22.Ad2 Axc3 23.Dxc3 [23.Axc3!? Dh8 (23...Dg5?! 24.Ad2 Df5 25.Tc1!↑) 24.Df3+ Rg8 25.0-0-0 Dh4±]
23...Tc8 24.Df3+ Rg8 25.Dg4 [25.Re2 Dh4=] 25...De8 26.Tc1 Txc1+ 27.Axc1 Rf7 28.Df3+ Rg8 29.Dc3
Dc6 30.Dxc6 Axc6 31.Ag5 Rf7 32.Ad8 b5 33.Rd2 Re8 34.Ab6 Ab7 35.Rc3 Rd7 36.Rb4 Rc6 37.Ac5 Ac8
38.Ra5 Ab7 39.Af8 Ac8 40.Axg7 Ab7 41.Af6 Ac8 42.g4 Rb7 43.a3 Rc6 44.Rb4 Ab7 45.f4 Ac8 46.a4
bxa4 47.Rxa4 Ad7 48.Rb4 Rb6 49.Ad8+ Rc6 50.g5 Ac8 51.Ra5 Rb7 52.Ae7 Ad7 53.b3 Ac8 54.Aa3 Ad7
55.Ac1 Ac8 56.Ad2 Ad7 57.b4 Ab5 58.f5 exf5 59.Af4 Rc6 60.e6 Rb7 61.e7 Diagrama



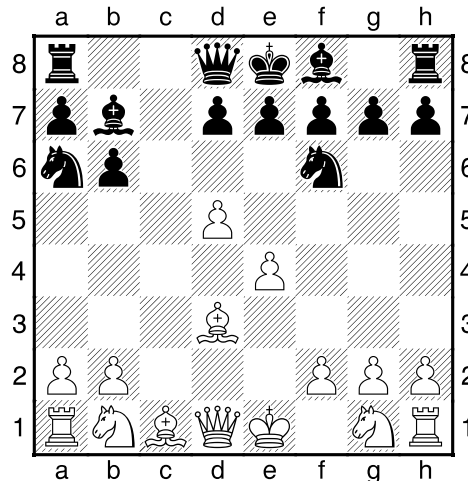
1/2-1/2

Estudio Casero Defensa Owen (B00) - Por el MF Job Sepúlveda

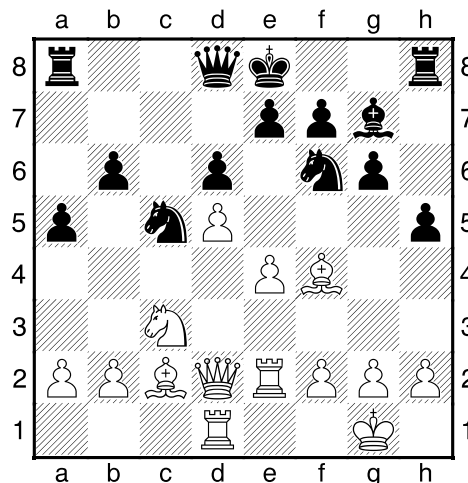
De Bonnieres,Philippe (2122) – Husson,Cybele (2061) [B00]

FRA–chT3 North 0304 France (7.4), 14.03.2004

1.e4 b6 2.d4 Ab7 3.d5 Cf6 4.Ad3 [RR 4.Cd2 c6 5.dxc6 Cxc6 6.Cgf3 g6 7.e5 Cg4 8.Cc4 b5 9.h3 bxc4 10.hxg4 Cxe5 11.Dd4 Ag7 12.Cxe5 Da5+ 13.Ad2 Dxe5+ 14.Dxe5 Axe5 15.Ac3 Axc3+ 16.bxc3 Tc8 17.Tb1 Aa8 18.Axc4 0-0 Bores,M–Proehl,H/Germany 2006/EXT 2007/0-1 (40)] 4...c6 5.c4 cxd5 6.cxd5 Ca6N
Diagrama

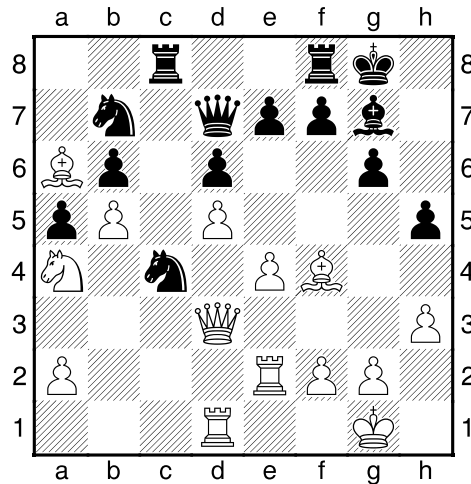


[RR 6...e6 7.dxe6 dxe6 8.Cc3 Ac5 9.Cf3 Cbd7 10.0-0 h6 11.a3 a6 12.De2 0-0 13.b4 Ad6 14.Ab2 Ce5 15.Tfd1 De7 16.Cxe5 Axe5 17.Ca4 Axb2 18.Dxb2 Cxe4 19.Cxb6 Tad8 20.Cc4 Dg5 21.Af1 Heintze,M–Wolf,S/Stralsund 1988/EXT 1997/½-½] 7.Cc3 [7.e5 Cg8 (7...Cxd5 8.Axa6 Ce3 9.Axe3 Axc2 10.Ab7 Axb7 11.Cf3) 8.Cf3] 7...Cc5 8.Ac2 a5 9.Cge2 [9.e5 Cg8 10.Cf3 g6 11.0-0 Ag7 12.Af4] 9...g6 10.Af4 d6 11.0-0 Ag7 12.Dd2 h5 13.Tad1 Aa6 14.Tfe1 Axe2 15.Txe2± Diagrama

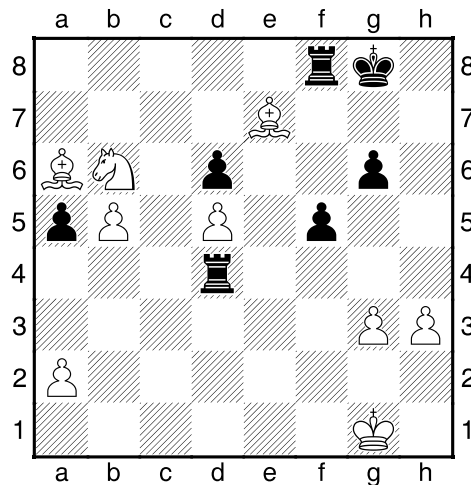


[15.Dxe2] 15...Cg4 16.Ca4 Tc8 17.b4 Cb7 18.Ad3 [18.Dd3 0-0 19.Db5 axb4 20.Cxb6 Tc5 21.Dxb4±] 18...0-0 19.h3 Ce5 20.Aa6 Cc4 21.Dd3 Dd7 22.b5!+– Diagrama

Estudio Casero Defensa Owen (B00) - Por el MF Job Sepúlveda

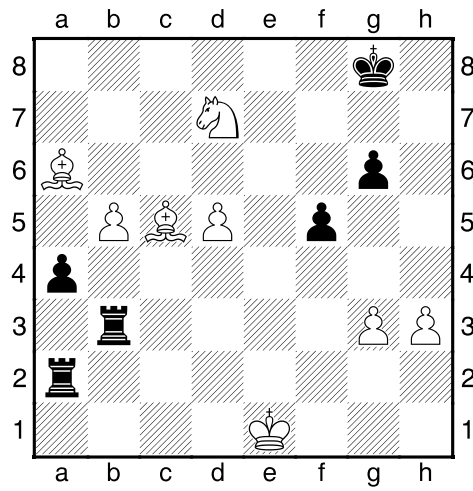


22...Dc7 23.Tc2 Cc5 24.Txc4 [24.Cxc5 Ce5 (24...bxc5 25.Txc4; 24...Dxc5 25.Axc8 Txc8 26.Tdc1) 25.Dd2 dxc5 (25...bxc5 26.Axc8 Txc8 27.Axe5 Axe5 28.Tb1 Db6 29.Tc4) 26.d6 exd6 27.Axc8 Txc8 28.Dxd6 Dxd6 29.Txd6 Tb8] 24...Cxd3 25.Txc7 Txc7 26.Txd3 Tc2 27.Td2 Tc4 28.Cxb6 Txe4 29.Ae3 f5 30.g3 [30.Tc2] 30...h4 31.Ag5?! [31.Cd7+--] 31...hxg3 32.fxg3?! Ad4+ 33.Txd4 Txd4 34.Axe7?? Diagrama



[34.Ac8+--] 34...Te8 35.Axd6 [35.Cc8 Rf7 36.Cxd6+ Rxe7 37.Cxe8 Rxe8 38.b6 Rd8] 35...Te2+ 36.Rf1 Txa2 37.Re1 a4 [37...Tdd2 38.Cc4 Te2+ 39.Rf1 Tec2 40.Ab4 axb4 41.Cd2 Txd2 42.Re1 Tdb2 43.b6 Ta1#] 38.Ac5 Td3 39.Cd7 Tb3 Diagrama

Estudio Casero Defensa Owen (B00) - Por el MF Job Sepúlveda



0-1